



State of Wisconsin
JIM DOYLE
Governor

DAVID STEINGRABER
Executive Director

Sexual Assaults in Wisconsin 2002

January 2007

This and other publications from the Office of Justice Assistance can be found at:

www.oja.wi.gov

This report was developed by the OJA Statistical Analysis Center and funded through grant award 2004-DB-BX-00-41 from the U.S. Department of Justice, Office of Justice Programs

Sexual Assaults in Wisconsin 2002

Uniform Crime Reporting Program

Coordinator
Lori Phillips

Contributors
Dean Ziemke
Kittie Smith
Melanie Martin
Kim Reniero
Michael Smith

Wisconsin Office of Justice Assistance
Statistical Analysis Center
131 West Wilson Street, Suite 610
Madison, WI 53702-0001
(608) 266-3323
www.oja.wi.gov

Acknowledgment

The Office of Justice Assistance wishes to acknowledge the contribution of local law enforcement agency staff and administrators in providing the data for this publication. Without their time and diligence, this report would not be possible.

- The Statistical Analysis Center is a program of the Wisconsin Office of Justice Assistance. Its purpose is to collect, analyze, interpret, and disseminate criminal justice data in the state of Wisconsin.
- The Statistical Analysis Center also provides technical assistance to local law enforcement agencies and promotes the coordination and development of criminal justice statistical systems throughout Wisconsin.
- The Statistical Analysis Center provides access to federal criminal justice statistical information to state and local government.
- The Statistical Analysis Center was funded in the year 2004 by grants from the U.S. Department of Justice.

Table of Contents...

	<u>Page Number</u>
Executive Summary	1
Introduction	3
National Overview	4
Number and Nature of Sexual Assaults	6
Trends in Reported Sexual Assaults	9
Victim Characteristics	11
Offender Characteristics	12
Relationship and Arrests Outcome	13
Sexual Assaults by Jurisdiction	15
Appendix A: Data Collection and Interpretation	27
Appendix B: Sexual Assault Definitions	28
Forcible Rape	28
Forcible Sodomy	28
Sexual Assault with an Object	28
Forcible Fondling	28
Statutory Rape	28
Ejaculate/Excrete Upon Victim	28
Appendix C: Sexual Assault Statutes	29
Appendix D: Sexual Assault Report Form	31

Executive Summary:

- There are 373 participating law enforcement agencies currently reporting sexual assaults.
- There were 5,822 sexual assaults reported in 2002. This is an increase of 14.3 percent from 2001.
- Sexual Assault Summary
 - Forcible rape comprised of 21 percent of reported assaults
 - Forcible sodomy comprised of 11 percent of reported assaults
 - Sexual assaults with an object comprised of 3 percent of reported assaults
 - Forcible fondling comprised of 46 percent of reported assaults
 - Statutory rape comprised of 18 percent of reported assaults
 - Ejaculation/excretion upon the victim made up less than 1 percent of reported sexual assaults
- Over 88 percent of assailants knew their victims while 6 percent were strangers.
- 18.3 percent of the assailants were related to the victim.
- The victims were predominantly female (85.1 percent) and white (81.4 percent) in reported assaults.
- The perpetrators were male (93.2 percent) and white (70 percent) for most reported sexual assaults.
- Over 69 percent of victims were under the age of 15.
- The scene of the assault was the victim's residence 30 percent of the time.
- In about 2 percent of the reported cases, the victim reported the use of a firearm, knife, blunt object, and/or drug.
- 49.6 percent of those arrested were referred to criminal or juvenile court. 41.3 percent of outcomes were unknown at the time of reporting.
- Approximately one forcible rape is reported every 7 hours, 16 minutes, 10 seconds.

Introduction

This report represents data on sexual assaults reported to law enforcement agencies in Wisconsin. The Statistical Analysis Center (SAC) has collected data on sexual assaults as part of the summary Uniform Crime Reporting (UCR) program since January 1, 1984. Most UCR data is collected as aggregate statistics (monthly totals). Sexual assault data is collected on a case-by-case basis. Further information about the collection and interpretation of this data is found in **Appendix A**.

Since the 1930's law enforcement agencies have been reporting on rape and attempted rape of females as part of the Federal Bureau of Investigation's Uniform Crime Reporting (UCR) program. We suspect these data represent an underreporting of rape because it only includes those rapes that are reported to police. Also, the FBI limited its definition of rape to include "penis to vagina" penetration or attempted penetration of females. Those sex crimes that did not include vaginal penetration were not included. The definitions for the expanded list of sexual crimes included in this report are described in **Appendix B**.

For many years, the UCR program has collected data on forcible rape, defined by the UCR program as "the carnal knowledge of a female forcibly and against her will." Sexual assault in Wisconsin is defined in sections 940.225 and 948.02 of state statutes. The statutes define four degrees of assault (sexual contact or sexual intercourse) between persons of either sex. This definition is considerably broader than the UCR definition of forcible rape. A copy of the Wisconsin sexual assault statutory language is found in **Appendix C**.

This report will focus on five sexual assault offense types defined by both the national and Wisconsin Incident Based Reporting Systems (WIBRS) and one additional assault category defined by state statutes and included in the WIBRS for a comprehensive count of sexual assaults. These offense types are: Forcible Rape, Forcible Sodomy, Assault with an Object, Forcible Fondling, Statutory Rape, and Ejaculate/Excrete upon Victim. A copy of this data collection form is found in **Appendix D**.

Please note that this report only includes cases determined to be founded (i.e., sufficient evidence to proceed). Reported but unfounded cases are excluded from this report. In order for a case to proceed, law enforcement must meet a self-determined evidentiary standard, which establishes that there is probable cause to believe that a crime has occurred. Meeting this standard on the basis of the victim's report alone may be difficult because sexual assault cases (especially less injurious ones) often result in a lack of physical evidence. Therefore, approximately ten percent of sexual assaults reported to law enforcement are determined to fall into the category of unfounded. It is important to distinguish unfounded from false cases. While unfounded cases lack a certain standard of evidence, false cases include evidence which proves to the standard of probable cause that a crime did not happen.

National Overview

This section represents national data on forcible rape offenses reported to the Federal Bureau of Investigation (FBI). The 2001 rates are the latest available for both the Midwest and the United States. Table 1 shows the volume of reported offenses for the past ten years. Table 2 shows the monthly volume. Table 3 shows a comparison of Wisconsin to other states within the Midwest.

Table 1
National Forcible Rape Statistics by Year

Year	Number of Offenses	Rate per 100,000 Inhabitants
1993	106,014	41.1
1994	102,096	39.2
1995	97,470	37.1
1996	95,769	36.1
1997	96,153	35.9
1998	93,103	34.4
1999	89,411	32.8
2000	90,186	32.0
2001	90,491	31.8

Based on law enforcement reports, an estimated 90,491 forcible rape offenses occurred in 2001 nationwide. This figure is 0.3 percent higher than the estimated 90,178 forcible rapes for 2000.

Table 2
National Forcible Rape Statistics by Month

Year	Jan	Feb	March	April	May	June	July	Aug	Sept	Oct	Nov	Dec
1993	7.7	6.9	8.5	8.2	8.9	9.2	9.7	9.3	8.3	8.1	7.5	7.7
1994	7.5	7.3	8.3	8.4	8.9	9.2	9.7	9.6	8.7	8.5	7.3	6.5
1995	7.7	7.1	8.5	8.0	8.9	8.5	8.4	9.9	8.8	8.7	7.8	6.9
1996	7.9	7.9	8.1	8.1	9.0	8.8	9.5	9.1	8.8	8.5	7.4	6.9
1997	7.9	7.0	8.0	8.2	9.1	9.5	9.7	9.4	8.8	8.2	7.4	6.7
1998	7.9	7.5	8.7	8.2	8.9	8.7	9.5	9.3	8.9	7.9	7.7	7.0
1999	8.1	7.3	8.2	8.2	8.6	8.8	9.6	9.5	8.3	8.3	7.9	7.2
2000	8.0	7.5	8.5	8.0	9.0	9.1	9.5	9.3	8.4	8.3	7.5	6.9
2001	7.7	7.1	8.4	8.3	8.8	8.7	9.7	9.4	8.6	8.5	7.6	7.2
2002	7.6	7.0	7.8	8.6	9.0	9.0	9.6	9.5	9.1	8.4	7.4	6.9

Monthly totals show the lowest volume occurred in December, while the largest number of forcible rapes was reported during the month of July.

The Midwest

In 2001, an estimated 22,685 forcible rape offenses occurred in the Midwest. Forcible rape offenses in that region comprised 25.1 percent of the national forcible rape volume. Females were victims of forcible rape in the Midwest at a rate of 68.6 offenses per 100,000 female inhabitants in 2001, a 1.5 percent increase from the 2000 estimates.

Table 3
Midwest Comparison of Forcible Rape Statistics

State	Number of Offenses	Rate per 100,000 Inhabitants
Illinois	3,938	31.5
Indiana	1,716	28.1
Iowa	649	22.2
Kansas	945	35.1
Michigan	5,264	52.7
Minnesota	2,236	45
Missouri	1,383	24.6
Nebraska	431	25.2
North Dakota	164	25.8
Ohio	4,466	39.9
South Dakota	351	46.4
Wisconsin	1,142	21.1

Arrests

Law enforcement agencies nationwide made an estimated 27,270 arrests for forcible rape in 2001. The national rate of arrests for forcible rape was 9.8 arrests per 100,000 U.S. inhabitants. Based on the national data of those arrested for forcible rape, 16.8 percent were under the age of 18 and 83.2 percent were over 18 years of age. Race distributions for adults and juveniles arrested were similar for 2003. Of those adults arrested for the offense, 62.7 percent were white, 34.8 percent were black, and 2.5 percent were other races. Among juvenile arrestees, 60.9 percent were white, 37.3 percent were black, and 1.7 percent were other races. When compared to the arrest volume recorded for 2000, the number of arrests for forcible rape decreased 1.4 percent from the 2000 figure.

The figures represented in the National overview section can be found in the publication titled "Crime in the United States" which is published by the Federal Bureau of investigation (FBI).

Number and Nature of Sexual Assaults in Wisconsin

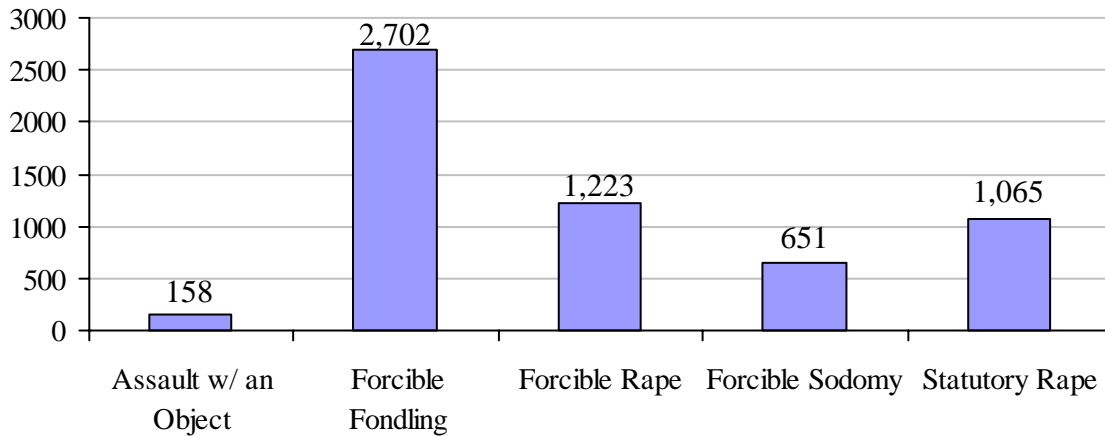
This section provides information on all reported and founded sexual assaults in Wisconsin. Table 1 shows assaults by category of degree for the year of 2002. Graph 1 shows the relative volume of cases for each type of sexual assault.

The six UCR categories of sexual assaults provide a measurable and objective means of categorizing them by the nature of victim impact, while psychological trauma should not be discounted. The best objective measure of the nature of victim impact related to a sexual assault is whether or not it involved penetration of a body orifice, with either genitalia or an object, forcibly or without consent. The offenses with the greatest possibility for physical injury (forcible rape, forcible sodomy and assault with an object) all encompass these characteristics and will be examined as one group later in this report.

Table 4
Sexual Assault Degree

	1st Degree		2nd Degree		3rd Degree		4th Degree		Total	
	N	%	N	%	N	%	N	%	N	%
Forcible Rape	513	20.5%	686	25.5%	24	22.0%	0	0.0%	1,223	21.0%
Forcible Sodomy	405	16.2%	217	8.1%	29	26.6%	0	0.0%	651	11.2%
Assault w/ an Object	93	3.7%	56	2.1%	9	8.3%	0	0.0%	158	2.7%
Forcible Fondling	1,307	52.2%	839	31.1%	43	39.4%	513	100.0%	2,702	46.4%
Statutory Rape	178	7.1%	887	32.9%	0	0.0%	0	0.0%	1,065	18.3%
Ejac./Excrete Upon Victim	9	0.4%	10	0.4%	4	3.7%	0	0.0%	23	0.4%
Total:	2,505	100.0%	2,695	100.0%	109	100.0%	513	100.0%	5,822	100.0%

Graph 1
Sexual Assault Offense Types



* The total for all the offenses does not equal the total number of sexual assaults reported because there were 23 incidents for the category ejaculate/excrete upon victim. A summary of data related to the ejaculate/excrete upon victim category is contained in Tables 7, 8, and 9.

Sexual Assault Victim Characteristics

- In 77% of all sexual assault victims were juveniles.
- Sexual assault victims were primarily female (85.1%) and primarily white (81.4%).
- Approximately 1% of victims had serious physical injuries; an additional 6% had minor injuries.

Sexual Assault Offender Characteristics

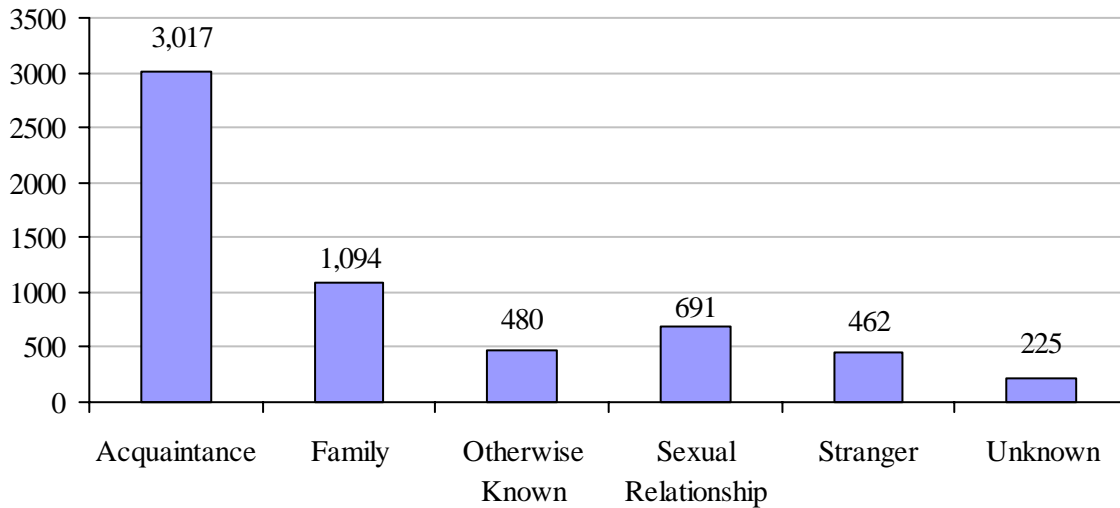
- In 93.2% of all sexual assaults the offender was male.
- Offender race was white in 70% of assaults; 22.4% involved black offenders.
- A dangerous weapon was used in 2.6% of the reported cases, an additional 11.7% used personal weapons, and 85.7% used no weapon.

Relationship and Arrest Outcome

- In 88.3% of all sexual assaults were committed by someone known to the victim, while strangers committed 8%.
- In 55.2% of all reported cases an offender was arrested.
- In 49.6% of all sexual assault offenders apprehended were referred to criminal or juvenile court.

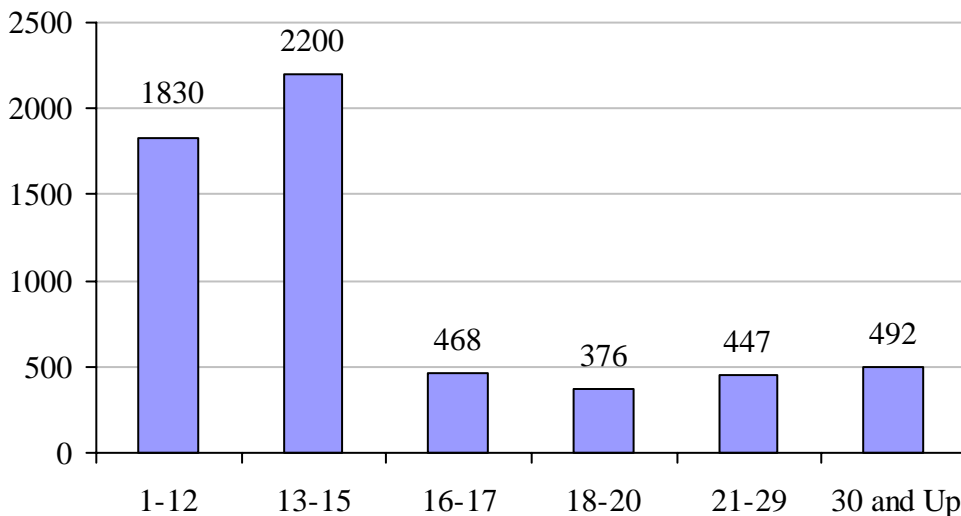
Graphs 2 and 3 show additional information regarding all offenses. Graph 2 shows the relationship of the assailant to the victim for all cases. Almost 88 percent of the assailants knew the victim including 19 percent who were related to the victim. Eight(8) percent of assailants were a stranger and 3.8 percent of assailants were unknown. Graph 3 shows the victim age of all reported sexual assaults. While reported incidents clearly decrease with increasing victim age, it should be noted that the age categories portrayed in Graph 3 are not of equal range.

Graph 2
Relationship of Assailant to Victim



Because of the multiple assailants in some sexual assaults the total of all relationships (5,962) is more than the total sexual assaults (5,822).

Graph 3
Sexual Assaults by Victim Age



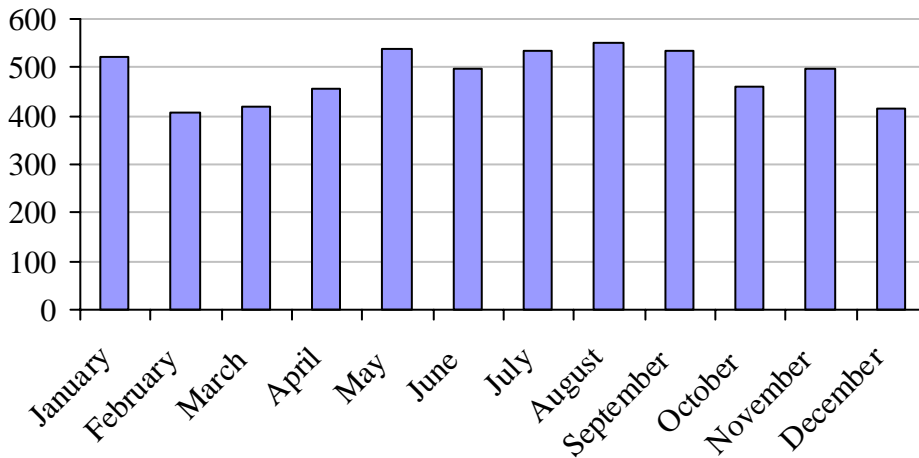
*The total for all age groups does not equal the total number of sexual assaults reported as there were 9 incidents where the age of the victim was unknown. A summary of data related to the unknown category is contained in tables 7, 8, and 9.

Table 5
Location of Sexual Assaults

	<u>Number</u>	<u>%</u>
Offender's Residence	1,602	27.5%
Other Indoor	120	2.1%
Other Residence	775	13.3%
Other/Unknown	489	8.4%
Outdoors	442	7.6%
School/College	316	5.4%
Vehicle	293	5.0%
Victim's Residence	1,787	30.7%
Total:	5,822	100.0%

Table 5 shows the location of all reported incidents. Over 30 percent of reported incidents occurred at the victim's residence and 27 percent occurred at the offender's residence.

Graph 4
Sexual Assaults by Month



Graph 4 depicts the number of sexual assaults by month. While sexual assaults occur consistently in all months, they tend to decline in the fall.

Trends in Reported Sexual Assaults

The total number of sexual assaults reported to law enforcement have been fairly stable for the last few years. Changes in the number of reported sexual assaults could reflect a number of variables. While an actual change in the number of sexual assaults is one possible explanation, other possibilities include a change in the number of victims willing to report, increased reporting by mandated reporters, and improvements or changes in record keeping.

Table 6
State Totals
Sexual Assaults 1993 - 2002

<u>Year</u>	<u>Sexual Assault Total</u>	<u>Percent Change</u>
1993	7,521	5.1%
1994	6,564	-12.7%
1995	6,101	-7.1%
1996	6,020	-1.3%
1997	5,881	-2.3%
1998	6,056	3.0%
1999	5,966	-1.5%
2000	5,345	-10.4%
2001	5,094	-4.7%
2002	5,822	14.3%

Graph 5
Yearly Sexual Assault Trends

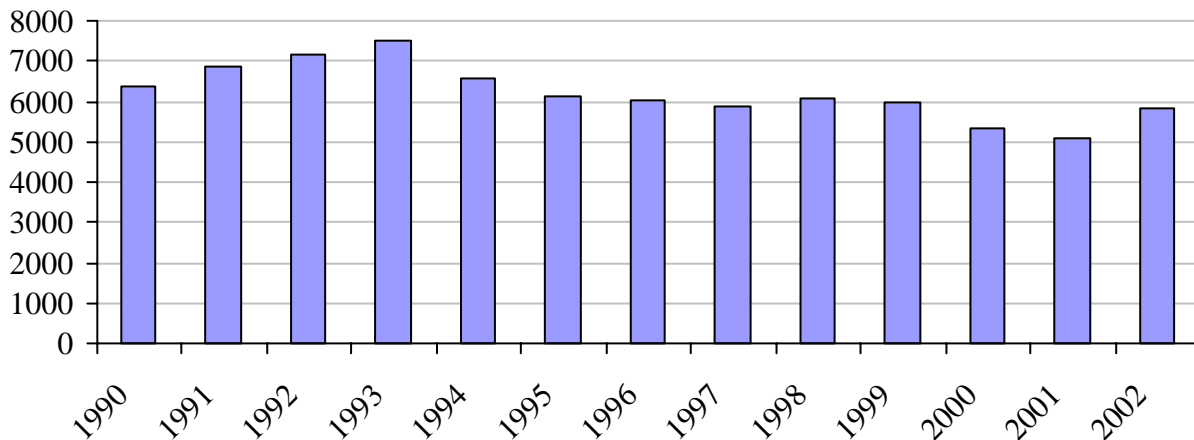


Table 7
Victim Characteristics - 2002

	Forcible Rape	Column %	Forcible Sodomy	Column %	Assault w/ an Object	Column %	Forcible Fondling	Column %	Statutory Rape	Column %	Ejac./ Excrete	Column %	Total	% of Total
Victim Age														
1-12	201	16.4%	325	49.9%	74	46.8%	1,157	42.8%	66	6.2%	7	30.4%	1,830	31.4%
13-15	274	22.4%	153	23.5%	32	20.3%	736	27.2%	999	93.8%	6	26.1%	2,200	37.8%
16-17	156	12.8%	56	8.6%	16	10.1%	233	8.6%	0	0.0%	7	30.4%	468	8.0%
18-20	173	14.1%	35	5.4%	12	7.6%	156	5.8%	0	0.0%	0	0.0%	376	6.5%
21-29	196	16.0%	30	4.6%	8	5.1%	213	7.9%	0	0.0%	0	0.0%	447	7.7%
30 and Up	223	18.2%	48	7.4%	15	9.5%	203	7.5%	0	0.0%	3	13.0%	492	8.5%
Unknown	0	0.0%	4	0.6%	1	0.6%	4	0.1%	0	0.0%	0	0.0%	9	0.2%
Total:	1,223	100.0%	651	100.0%	158	100.0%	2,702	100.0%	1,065	100.0%	23	100.0%	5,822	100.0%
Victim Sex														
Female	1,223	100.0%	359	55.1%	143	90.5%	2,312	85.6%	901	84.6%	19	82.6%	4,957	85.1%
Male	0	0.0%	292	44.9%	15	9.5%	390	14.4%	164	15.4%	4	17.4%	865	14.9%
Unknown	0	0.0%	0	0.0%	0	0.0%	0	0.0%	0	0.0%	0	0.0%	0	0.0%
Total:	1,223	100.0%	651	100.0%	158	100.0%	2,702	100.0%	1,065	100.0%	23	100.0%	5,822	100.0%
Victim Race														
White	904	73.9%	509	78.2%	122	77.2%	2,321	85.9%	860	80.8%	22	95.7%	4,738	81.4%
Black	274	22.4%	119	18.3%	30	19.0%	276	10.2%	130	12.2%	1	4.3%	830	14.3%
Native Amer.	15	1.2%	8	1.2%	3	1.9%	36	1.3%	28	2.6%	0	0.0%	90	1.5%
Asian	21	1.7%	2	0.3%	0	0.0%	21	0.8%	23	2.2%	0	0.0%	67	1.2%
Unknown	9	0.7%	13	2.0%	3	1.9%	48	1.8%	24	2.3%	0	0.0%	97	1.7%
Total:	1,223	100.0%	651	100.0%	158	100.0%	2,702	100.0%	1,065	100.0%	23	100.0%	5,822	100.0%
Injuries														
Serious **	23	1.9%	13	2.0%	6	3.8%	6	0.2%	0	0.0%	0	0.0%	48	0.8%
None	982	80.3%	581	89.2%	133	84.2%	2,631	97.4%	1,065	100.0%	22	95.7%	5,414	93.0%
Minor	218	17.8%	57	8.8%	19	12.0%	65	2.4%	0	0.0%	1	4.3%	360	6.2%
Total:	1,223	100.0%	651	100.0%	158	100.0%	2,702	100.0%	1,065	100.0%	23	100.0%	5,822	100.0%

** Serious injuries include broken bones, internal injuries, severe cuts, lost teeth, and unconsciousness.

Table 8
Offender Characteristics - 2002

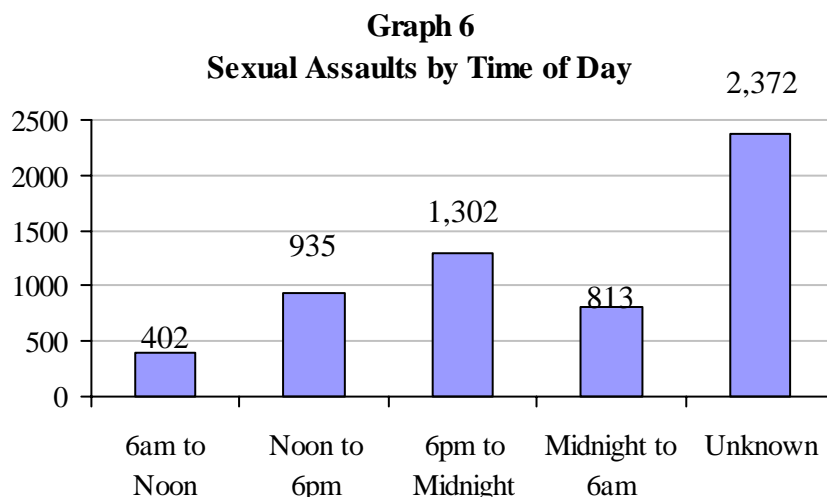
	Forcible Rape	Column %	Forcible Sodomy	Column %	Assault w/ an Object	Column %	Forcible Fondling	Column %	Statutory Rape	Column %	Ejac./ Excrete	Column %	Total	% of Total
Offender Age														
1-12	25	1.9%	113	16.8%	16	10.0%	354	12.9%	16	1.5%	1	4.3%	525	8.8%
13-15	100	7.7%	156	23.2%	22	13.8%	500	18.3%	236	21.9%	4	17.4%	1,018	17.1%
16-17	110	8.5%	83	12.4%	13	8.1%	212	7.8%	262	24.3%	5	21.7%	685	11.5%
18-20	219	16.8%	49	7.3%	15	9.4%	217	7.9%	278	25.7%	1	4.3%	779	13.1%
21-29	333	25.6%	90	13.4%	27	16.9%	408	14.9%	191	17.7%	4	17.4%	1,053	17.6%
30 and Up	391	30.1%	146	21.8%	57	35.6%	902	33.0%	45	4.2%	8	34.8%	1,549	26.0%
Unknown	123	9.5%	34	5.1%	10	6.3%	141	5.2%	52	4.8%	0	0.0%	360	6.0%
Total:	1,301	100.0%	671	100.0%	160	100.0%	2,734	100.0%	1,080	100.0%	23	100.0%	5,969	100.0%
Offender Sex														
Female	1	0.1%	74	11.0%	15	9.4%	148	5.4%	155	14.4%	2	8.7%	395	6.6%
Male	1,300	99.9%	596	88.8%	144	90.0%	2,581	94.4%	921	85.3%	21	91.3%	5,563	93.2%
Unknown	0	0.0%	1	0.1%	1	0.6%	5	0.2%	4	0.4%	0	0.0%	11	0.2%
Total:	1,301	100.0%	671	100.0%	160	100.0%	2,734	100.0%	1,080	100.0%	23	100.0%	5,969	100.0%
Offender Race														
White	696	53.5%	455	67.8%	110	68.8%	2,117	77.4%	778	72.0%	21	91.3%	4,177	70.0%
Black	489	37.6%	186	27.7%	35	21.9%	447	16.3%	180	16.7%	2	8.7%	1,339	22.4%
Native Amer.	16	1.2%	9	1.3%	3	1.9%	47	1.7%	22	2.0%	0	0.0%	97	1.6%
Asian	36	2.8%	2	0.3%	2	1.3%	25	0.9%	29	2.7%	0	0.0%	94	1.6%
Unknown	64	4.9%	19	2.8%	10	6.3%	98	3.6%	71	6.6%	0	0.0%	262	4.4%
Total:	1,301	100.0%	671	100.0%	160	100.0%	2,734	100.0%	1,080	100.0%	23	100.0%	5,969	100.0%
Weapon														
Serious **	107	8.2%	19	2.8%	11	6.9%	19	0.7%	0	0.0%	0	0.0%	156	2.6%
Personal	384	29.5%	67	10.0%	38	23.8%	203	7.4%	0	0.0%	4	17.4%	696	11.7%
None	810	62.3%	585	87.2%	111	69.4%	2,512	91.9%	1,080	100.0%	19	82.6%	5,117	85.7%
Total:	1,301	100.0%	671	100.0%	160	100.0%	2,734	100.0%	1,080	100.0%	23	100.0%	5,969	100.0%
Offenders														
Single	1,216	93.5%	647	96.4%	158	98.8%	2,688	98.3%	1,062	98.3%	23	100.0%	5,794	97.1%
Multiple	85	6.5%	24	3.6%	2	1.3%	46	1.7%	18	1.7%	0	0.0%	175	2.9%
Total:	1,301	100.0%	671	100.0%	160	100.0%	2,734	100.0%	1,080	100.0%	23	100.0%	5,969	100.0%

** Any type of firearm, knife, blunt object, poison or drugs.

Table 9
Relationship and Arrest Outcome - 2002

	Forcible Rape	Column %	Forcible Sodomy	Column %	Assault w/ an Object	Column %	Forcible Fondling	Column %	Statutory Rape	Column %	Ejac./ Excrete	Column %	Total	% of Total
Relationship														
Acquaintance	675	51.9%	344	51.3%	87	54.4%	1,409	51.5%	495	45.8%	7	30.4%	3,017	50.5%
Family	173	13.3%	178	26.5%	46	28.8%	643	23.5%	44	4.1%	10	43.5%	1,094	18.3%
Otherwise Known	79	6.1%	47	7.0%	8	5.0%	302	11.0%	43	4.0%	1	4.3%	480	8.0%
Sex Relationship	101	7.8%	30	4.5%	8	5.0%	80	2.9%	468	43.3%	4	17.4%	691	11.6%
Stranger	194	14.9%	42	6.3%	3	1.9%	209	7.6%	13	1.2%	1	4.3%	462	7.7%
Unknown	79	6.1%	30	4.5%	8	5.0%	91	3.3%	17	1.6%	0	0.0%	225	3.8%
Total:	1,301	100.0%	671	100.0%	160	100.0%	2,734	100.0%	1,080	100.0%	23	100.0%	5,969	100.0%
Outcome														
Arrested	606	46.6%	384	57.2%	75	46.9%	1,540	56.3%	661	61.2%	17	73.9%	3,283	55.0%
Juvenile	24	1.8%	28	4.2%	6	3.8%	107	3.9%	38	3.5%	1	4.3%	204	3.4%
No Arrest	606	46.6%	246	36.7%	71	44.4%	1,014	37.1%	344	31.9%	5	21.7%	2,286	38.3%
No Prosecution	65	5.0%	13	1.9%	8	5.0%	73	2.7%	37	3.4%	0	0.0%	196	3.3%
Total:	1,301	100.0%	671	100.0%	160	100.0%	2,734	100.0%	1,080	100.0%	23	100.0%	5,969	100.0%
LE Disposition														
Criminal Court	473	36.4%	171	25.5%	49	30.6%	912	33.4%	407	37.7%	10	43.5%	2,022	33.9%
Handled & Released	17	1.3%	20	3.0%	2	1.3%	93	3.4%	40	3.7%	4	17.4%	176	2.9%
Juvenile Court	83	6.4%	172	25.6%	18	11.3%	452	16.5%	197	18.2%	1	4.3%	923	15.5%
Other	30	2.3%	18	2.7%	6	3.8%	75	2.7%	14	1.3%	2	8.7%	145	2.4%
Unknown	698	53.7%	290	43.2%	85	53.1%	1,202	44.0%	422	39.1%	6	26.1%	2,703	45.3%
Total:	1,301	100.0%	671	100.0%	160	100.0%	2,734	100.0%	1,080	100.0%	23	100.0%	5,969	100.0%

The following graph shows the hour of which sexual assaults occurred with the individual hours broken down into six hour segments. Where the time was known many of the incidents occurred between the hours of 6pm and midnight. This time period accounted for 38 percent of all reported offenses.



The following information is designed to convey the annual incidents reported by showing the relative frequency of the offenses. This method of display does not imply regularity in the reported offenses; rather it represents the annual ratio of incidents to fixed time intervals and therefore should be viewed with care.

Offense

- Forcible Rape
- Forcible Sodomy
- Assault w/ an Object
- Forcible Fondling
- Statutory Rape
- Ejac./Excrete Upon Victim
- Total**



Frequency During 2004

- One every 7 hours, 9 minutes, 45 seconds
- One every 13 hours, 27 minutes, 22 seconds
- One every 2 days, 7 hours, 26 minute, 34 seconds
- One every 3 hours, 14 minutes, 31 seconds
- One every 8 hours, 13 minutes, 31 seconds
- One every 15 days, 20 hours, 52 minutes, 10 seconds
- One every 1 hour, 30 minutes, 16 seconds**

Sexual Assaults by Jurisdiction

Law enforcement agencies submit sexual assault data on a monthly basis as part of the Uniform Crime Reports. If there are no assaults to report, a zero report is indicated.

Table 10 on the following pages shows the actual number of sexual assaults reported by each reporting jurisdiction. County and state totals are summed from these figures.

Table 10
Sexual Assaults by County and Municipality 2002

	Total 2001	Forcible Rape	Forcible Sodomy	Assault w/ Object	Forcible Fondling	Statutory Rape	Ejac./Excrete Upon Victim	Total 2002
ADAMS COUNTY								
ADAMS CO SO	0	0	0	0	0	0	0	0
ROME TOWN PD	0	0	0	0	0	0	0	0
COUNTY TOTAL:	0	0	0	0	0	0	0	0
ASHLAND COUNTY								
ASHLAND CO SO	9	1	0	0	13	2	0	16
ASHLAND PD	4	1	2	1	3	1	0	8
COUNTY TOTAL:	13	2	2	1	16	3	0	24
BARRON COUNTY								
BARRON CO SO	41	9	10	1	27	5	0	52
BARRON PD	2	1	0	0	2	1	0	4
CHETEK PD	0	1	0	0	1	2	0	4
CUMBERLAND PD	0	0	0	0	0	0	0	0
RICE LAKE PD	23	3	1	0	7	2	0	13
COUNTY TOTAL:	66	14	11	1	37	10	0	73
BAYFIELD COUNTY								
BAYFIELD CO SO	11	0	3	3	13	3	0	22
BAYFIELD PD	1	0	0	0	0	0	0	0
WASHBURN PD	1	1	0	0	1	0	0	2
COUNTY TOTAL:	13	1	3	3	14	3	0	24
BROWN COUNTY								
ASHWAUBENON PD	20	1	5	0	10	6	0	22
BROWN CO SO	74	14	42	3	45	17	1	122
DENMARK PD	0	0	0	0	0	0	0	0
DEPERE PD	8	0	0	0	2	1	0	3
GREEN BAY PD	209	61	22	4	119	93	0	299
HOBART-LAWRENCE PD	0	0	0	0	0	0	0	0
PULASKI PD	2	0	0	0	0	0	0	0
UW-GREEN BAY PD	0	0	0	0	0	0	0	0
COUNTY TOTAL:	313	76	69	7	176	117	1	446
BUFFALO COUNTY								
BUFFALO CO SO	0	1	0	0	1	2	0	4
MONDOVI PD	0	0	0	0	0	0	0	0
COUNTY TOTAL:	0	1	0	0	1	2	0	4
BURNETT COUNTY								
BURNETT CO SO	1	3	1	2	3	0	0	9
GRANTSBURG PD	0	0	0	0	0	0	0	0
SIREN PD	2	0	2	0	2	0	1	5
WEBB LAKE PD	0	0	0	0	0	0	0	0
COUNTY TOTAL:	3	3	3	2	5	0	1	14
CALUMET COUNTY								
BRILLION PD	0	0	0	0	0	0	0	0
CALUMET CO SO	18	0	1	0	3	3	0	7
CHILTON PD	0	0	5	0	4	8	0	17
NEW HOLSTEIN PD	1	0	0	0	1	0	0	1
COUNTY TOTAL:	19	0	6	0	8	11	0	25

	Total 2001	Forcible Rape	Forcible Sodomy	Assault w/ Object	Forcible Fondling	Statutory Rape	Ejac./Excrete Upon Victim	Total 2002
CHIPPEWA COUNTY								
BLOOMER PD	0	0	0	0	0	0	0	0
CHIPPEWA CO SO	17	3	0	0	10	6	0	19
CHIPPEWA FALLS PD	14	8	4	0	23	9	0	44
CORNELL PD	1	0	0	0	1	0	0	1
LAKE HALLIE PD	0	0	0	0	1	0	0	1
STANLEY PD	1	0	0	0	0	0	0	0
COUNTY TOTAL:	33	11	4	0	35	15	0	65
CLARK COUNTY								
CLARK CO SO	49	2	1	0	22	12	0	37
COLBY-ABBOTSFORD PD	0	0	0	0	0	0	0	0
NEILLSVILLE PD	0	1	0	0	0	0	0	1
COUNTY TOTAL:	49	3	1	0	22	12	0	38
COLUMBIA COUNTY								
COLUMBIA CO SO	22	1	6	0	11	6	0	24
COLUMBUS PD	0	0	0	0	0	0	0	0
LODI PD	0	0	0	0	0	0	0	0
PORTAGE PD	7	0	0	0	10	0	0	10
POYNETTE PD	0	0	1	0	0	0	0	1
WISCONSIN DELLS PD	4	0	0	0	1	0	0	1
COUNTY TOTAL:	33	1	7	0	22	6	0	36
CRAWFORD COUNTY								
CRAWFORD CO SO	3	0	0	0	4	2	0	6
PRAIRIE DU CHIEN PD	1	2	0	0	4	1	0	7
COUNTY TOTAL:	4	2	0	0	8	3	0	13

	Total 2001	Forcible Rape	Forcible Sodomy	Assault w/ Object	Forcible Fondling	Statutory Rape	Ejac./Excrete Upon Victim	Total 2002
DANE COUNTY								
BELLEVILLE PD	0	0	0	0	0	0	0	0
COTTAGE GROVE PD	5	0	0	0	4	0	0	4
CROSS PLAINS PD	0	0	0	0	0	0	0	0
DANE CO SO	0	0	0	0	0	0	0	0
DANE PD	0	0	0	0	0	0	0	0
DEERFIELD PD	0	0	0	0	0	0	0	0
DEFOREST PD	3	3	1	0	2	1	0	7
FITCHBURG PD	10	4	0	0	4	1	0	9
MADISON PD	72	93	26	1	126	20	1	267
MADISON TOWN PD	10	7	2	0	5	1	0	15
MAPLE BLUFF PD	0	0	0	0	0	0	0	0
MARSHALL PD	3	3	0	0	0	0	0	3
MC FARLAND PD	0	0	0	0	0	0	0	0
MIDDLETON PD	4	1	2	0	3	1	0	7
MONONA PD	2	0	0	0	0	0	0	0
MOUNT HOREB PD	0	1	0	0	0	0	0	1
OREGON PD	2	0	0	0	0	0	0	0
SHOREWOOD HILLS PD	0	0	0	0	0	0	0	0
STOUGHTON PD	10	1	0	0	8	2	0	11
SUN PRAIRIE PD	33	0	3	0	7	0	0	10
UW-MADISON	1	3	0	0	0	0	0	3
VERONA PD	1	1	0	0	1	0	0	2
WAUNAKEE PD	0	1	0	0	1	0	0	2
WI CAPITOL POLICE	0	0	0	0	0	0	0	0
COUNTY TOTAL:	156	118	34	1	161	26	1	341
DODGE COUNTY								
BEAVER DAM PD	25	0	0	0	9	4	0	13
DODGE CO SO	22	2	3	0	8	3	0	16
FOX LAKE PD	2	0	0	0	1	0	0	1
HORICON PD	1	0	0	0	1	0	0	1
IRON RIDGE PD	1	0	0	0	2	0	0	2
JUNEAU PD	0	0	1	0	0	0	0	1
MAYVILLE PD	4	2	0	0	1	0	0	3
THERESA PD	1	1	0	0	0	0	0	1
WAUPUN PD	7	0	0	0	10	0	0	10
COUNTY TOTAL:	63	5	4	0	32	7	0	48
DOOR COUNTY								
DOOR CO SO	8	3	0	0	2	3	0	8
STURGEON BAY PD	10	0	0	0	2	0	0	2
COUNTY TOTAL:	18	3	0	0	4	3	0	10
DOUGLAS COUNTY								
DOUGLAS CO SO	19	2	0	1	8	3	0	14
SUPERIOR PD	72	16	13	3	58	10	0	100
UW SUPERIOR	1	0	1	0	3	0	0	4
COUNTY TOTAL:	92	18	14	4	69	13	0	118

	Total 2001	Forcible Rape	Forcible Sodomy	Assault w/ Object	Forcible Fondling	Statutory Rape	Ejac./Excrete Upon Victim	Total 2002
DUNN COUNTY								
DUNN CO SO	23	5	1	0	25	9	0	40
ELK MOUND PD	0	0	0	0	0	0	0	0
MENOMONIE PD	22	6	2	1	22	8	0	39
UW-STOUT	2	2	0	0	0	0	0	2
COUNTY TOTAL:	47	13	3	1	47	17	0	81
EAU CLAIRE COUNTY								
ALTOONA PD	0	1	0	0	5	0	0	6
EAU CLAIRE CO SO	12	2	3	0	6	1	0	12
EAU CLAIRE PD	112	14	13	2	45	21	0	95
UW-EAU CLAIRE	0	0	0	0	0	0	0	0
COUNTY TOTAL:	124	17	16	2	56	22	0	113
FLORENCE COUNTY								
FLORENCE CO SO	0	0	0	0	0	0	0	0
COUNTY TOTAL:	0	0	0	0	0	0	0	0
FOND DU LAC COUNTY								
CAMPBELLSPORT PD	0	0	0	0	1	2	2	5
FOND DU LAC CO SO	26	1	1	1	20	3	0	26
FOND DU LAC PD	50	11	14	0	60	9	0	94
NORTH FOND DU LAC PD	3	1	2	0	0	0	0	3
RIPON PD	5	3	12	3	2	1	0	21
COUNTY TOTAL:	84	16	29	4	83	15	2	149
FOREST COUNTY								
CRANDON PD	2	0	0	0	1	0	0	1
FOREST CO SO	7	1	2	0	9	2	0	14
COUNTY TOTAL:	9	1	2	0	10	2	0	15
GRANT COUNTY								
BOSCOBEL PD	1	0	0	0	0	0	0	0
CUBA CITY PD	1	0	0	0	0	0	0	0
FENNIMORE PD	3	0	0	0	0	0	0	0
GRANT CO SO	3	0	1	0	1	5	0	7
HAZEL GREEN PD	0	0	0	0	0	0	0	0
LANCASTER PD	2	0	0	0	0	0	0	0
PLATTEVILLE PD	13	3	2	0	4	1	1	11
UW-PLATTEVILLE	3	3	0	0	0	0	0	3
COUNTY TOTAL:	26	6	3	0	5	6	1	21
GREEN COUNTY								
BRODHEAD PD	0	0	0	0	0	0	0	0
GREEN CO SO	17	3	2	0	8	4	0	17
MONROE PD	19	0	4	0	5	0	0	9
NEW GLARUS PD	0	1	1	0	1	0	0	3
COUNTY TOTAL:	36	4	7	0	14	4	0	29
GREEN LAKE COUNTY								
BERLIN PD	8	3	0	0	8	7	0	18
GREEN LAKE CO SO	20	2	0	2	6	10	0	20
GREEN LAKE PD	0	0	0	0	0	0	0	0
MARKESAN PD	1	0	0	0	0	1	0	1
PRINCETON PD	0	0	0	0	0	0	0	0
COUNTY TOTAL:	29	5	0	2	14	18	0	39

	Total 2001	Forcible Rape	Forcible Sodomy	Assault w/ Object	Forcible Fondling	Statutory Rape	Ejac./Excrete Upon Victim	Total 2002
IOWA COUNTY								
DODGEVILLE PD	3	1	1	0	2	0	0	4
IOWA CO SO	10	2	2	2	6	2	0	14
MINERAL PT PD	4	0	0	0	1	0	0	1
COUNTY TOTAL:	17	3	3	2	9	2	0	19
IRON COUNTY								
HURLEY PD	0	0	0	0	1	0	0	1
IRON CO SO	1	0	0	0	1	0	0	1
COUNTY TOTAL:	1	0	0	0	2	0	0	2
JACKSON COUNTY								
BLACK RIVER FALLS PD	1	3	1	0	2	0	0	6
JACKSON CO SO	17	0	0	0	13	8	0	21
COUNTY TOTAL:	18	3	1	0	15	8	0	27
JEFFERSON COUNTY								
FORT ATKINSON PD	11	0	3	0	7	13	0	23
JEFFERSON CO SO	35	9	5	0	9	9	0	32
JEFFERSON PD	0	0	0	0	0	0	0	0
LAKE MILLS PD	7	2	1	0	4	8	0	15
PALMYRA PD	3	0	0	0	0	0	0	0
WATERLOO PD	3	1	0	0	1	2	0	4
WATERTOWN PD	25	5	0	0	30	33	0	68
COUNTY TOTAL:	84	17	9	0	51	65	0	142
JUNEAU COUNTY								
ELROY PD	0	4	1	0	2	0	0	7
JUNEAU CO SO	0	2	0	0	0	0	0	2
MAUSTON PD	2	0	1	0	1	0	0	2
NEW LISBON PD	0	0	0	0	0	0	0	0
COUNTY TOTAL:	2	6	2	0	3	0	0	11
KENOSHA COUNTY								
KENOSHA CO SO	39	10	5	0	17	4	0	36
KENOSHA PD	114	30	6	1	51	23	0	111
PLEASANT PRAIRIE PD	3	5	0	1	1	1	0	8
SILVER LAKE PD	1	0	1	0	0	0	0	1
TWIN LAKES PD	4	3	1	0	12	1	0	17
UW-PARKSIDE	3	2	0	1	6	0	0	9
COUNTY TOTAL:	164	50	13	3	87	29	0	182
KEWAUNEE COUNTY								
ALGOMA PD	4	1	0	0	0	1	0	2
KEWAUNEE CO SO	0	0	0	0	0	0	0	0
KEWAUNEE PD	0	0	0	0	0	0	0	0
LUXEMBURG PD	0	0	0	0	0	0	0	0
COUNTY TOTAL:	4	1	0	0	0	1	0	2

	Total 2001	Forcible Rape	Forcible Sodomy	Assault w/ Object	Forcible Fondling	Statutory Rape	Ejac./Excrete Upon Victim	Total 2002
LA CROSSE COUNTY								
BANGOR PD	0	0	0	0	0	0	0	0
CAMPBELL PD	5	1	0	0	1	1	0	3
HOLMEN PD	2	0	0	0	0	0	0	0
LA CROSSE CO SO	29	3	2	0	9	5	0	19
LA CROSSE PD	49	14	17	4	39	21	0	95
ONALASKA PD	0	0	0	0	0	0	0	0
UW-LA CROSSE	0	1	0	0	0	0	0	1
WEST SALEM PD	0	2	0	0	0	0	0	2
COUNTY TOTAL:	85	21	19	4	49	27	0	120
LAFAYETTE COUNTY								
DARLINGTON PD	2	2	1	0	0	3	0	6
LAFAYETTE CO SO	11	1	0	0	7	4	0	12
COUNTY TOTAL:	13	3	1	0	7	7	0	18
LANGLADE COUNTY								
ANTIGO PD	0	0	0	0	0	0	0	0
LANGLADE CO SO	1	0	0	0	0	0	0	0
COUNTY TOTAL:	1	0	0	0	0	0	0	0
LINCOLN COUNTY								
LINCOLN CO SO	8	0	1	0	4	1	0	6
MERRILL PD	22	4	1	2	2	9	0	18
TOMAHAWK PD	0	0	0	0	1	2	0	3
COUNTY TOTAL:	30	4	2	2	7	12	0	27
MANITOWOC COUNTY								
CLEVELAND PD	0	0	0	0	0	0	0	0
KIEL PD	0	0	0	0	0	0	0	0
MANITOWOC CO SO	50	16	4	0	23	13	0	56
MANITOWOC PD	41	3	5	2	31	28	0	69
MISHICOT PD	0	0	0	0	0	0	0	0
TWO RIVERS PD	6	7	2	0	0	7	0	16
VALDERS PD	0	0	0	0	0	0	0	0
COUNTY TOTAL:	97	26	11	2	54	48	0	141
MARATHON COUNTY								
EDGAR PD	1	0	0	0	0	0	0	0
EVEREST METRO PD	12	1	3	0	6	4	0	14
MARATHON CITY PD	0	0	0	0	0	0	0	0
MARATHON CO SO	22	2	4	18	20	6	4	54
MOSINEE PD	0	0	0	0	0	2	0	2
ROTHSCHILD PD	2	0	1	0	5	0	0	6
SPENCER PD	0	0	0	0	0	0	0	0
WAUSAU PD	98	24	11	7	27	17	0	86
COUNTY TOTAL:	135	27	19	25	58	29	4	162
MARINETTE COUNTY								
MARINETTE CO SO	3	0	0	0	0	0	0	0
MARINETTE PD	5	1	1	0	0	1	0	3
NIAGARA PD	1	0	0	0	2	0	0	2
PESHTIGO PD	0	1	0	0	0	0	0	1
COUNTY TOTAL:	9	2	1	0	2	1	0	6

	Total 2001	Forcible Rape	Forcible Sodomy	Assault w/ Object	Forcible Fondling	Statutory Rape	Ejac./Excrete Upon Victim	Total 2002
MARQUETTE COUNTY								
MARQUETTE CO SO	9	3	0	0	3	6	0	12
COUNTY TOTAL:	9	3	0	0	3	6	0	12
MENOMINEE COUNTY								
MENOMINEE CO SO	0	1	0	0	0	0	0	1
MENOMINEE TRIBAL PD	1	0	0	0	0	0	0	0
COUNTY TOTAL:	1	1	0	0	0	0	0	1
MILWAUKEE COUNTY								
BAYSIDE PD	2	0	0	0	0	1	0	1
BROWN DEER PD	14	4	4	0	4	2	0	14
CUDAHY PD	16	4	0	0	4	2	0	10
FOX POINT PD	3	0	0	0	3	0	0	3
FRANKLIN PD	26	6	2	1	11	1	0	21
GLENDALE PD	0	0	0	0	0	0	0	0
GREENDALE PD	9	0	0	0	5	0	0	5
GREENFIELD PD	18	6	3	0	14	1	0	24
HALES CORNERS PD	1	0	0	0	0	0	0	0
MILWAUKEE CO SO	1	0	0	0	0	0	0	0
MILWAUKEE PD	1076	332	124	33	278	118	0	885
OAK CREEK PD	11	12	0	0	2	0	0	14
RIVER HILLS PD	0	0	0	0	1	0	0	1
SHOREWOOD PD	6	4	2	0	4	0	0	10
SOUTH MILWAUKEE PD	11	2	2	0	12	2	0	18
ST. FRANCIS PD	4	0	0	0	6	2	0	8
UW-MILWAUKEE	3	3	1	0	4	0	0	8
WAUWATOSA PD	8	6	1	0	3	0	1	11
WEST ALLIS PD	37	8	8	0	23	1	0	40
WEST MILWAUKEE PD	7	1	1	0	9	0	0	11
WHITEFISH BAY PD	0	1	0	0	0	0	0	1
COUNTY TOTAL:	1,253	389	148	34	383	130	1	1,085
MONROE COUNTY								
MONROE CO SO	12	2	2	0	2	3	0	9
SPARTA PD	19	4	3	0	17	5	0	29
TOMAH PD	3	3	0	0	2	0	0	5
COUNTY TOTAL:	34	9	5	0	21	8	0	43
OCONTO COUNTY								
OCONTO CO SO	0	0	0	0	0	0	0	0
OCONTO FALLS PD	5	0	1	0	3	0	0	4
OCONTO PD	0	0	0	0	0	0	0	0
COUNTY TOTAL:	5	0	1	0	3	0	0	4
ONEIDA COUNTY								
MINOCQUA PD	0	0	0	0	0	0	0	0
ONEIDA CO SO	28	1	2	0	11	12	0	26
RHINELANDER PD	10	3	1	2	3	6	0	15
THREE LAKES PD	0	0	0	0	0	0	0	0
WOODRUFF PD	0	0	0	0	0	0	0	0
COUNTY TOTAL:	38	4	3	2	14	18	0	41

	Total 2001	Forcible Rape	Forcible Sodomy	Assault w/ Object	Forcible Fondling	Statutory Rape	Ejac./Excrete Upon Victim	Total 2002
OUTAGAMIE COUNTY								
APPLETON PD	138	18	24	5	71	60	0	178
COMBINED LOCKS PD	7	0	0	0	0	0	0	0
FOX VALLEY METRO PD	21	0	4	0	5	7	0	16
GRAND CHUTE PD	11	4	4	0	4	4	0	16
HORTONVILLE PD	0	0	0	0	0	0	0	0
KAUKAUNA PD	29	2	3	0	15	2	0	22
ONEIDA TRIBAL PD	0	0	0	0	0	0	0	0
OUTAGAMIE CO SO	39	11	9	5	28	0	0	53
COUNTY TOTAL:	245	35	44	10	123	73	0	285
OZAUKEE COUNTY								
CEDARBURG PD	15	0	0	0	1	1	0	2
GRAFTON PD	0	0	0	0	0	2	0	2
MEQUON PD	5	0	1	0	4	1	0	6
OZAUKEE CO SO	7	3	2	0	6	0	0	11
PORT WASHINGTON PD	4	0	0	0	8	1	0	9
SAUKVILLE PD	0	0	0	0	0	0	0	0
THIENSVILLE PD	1	0	0	0	1	0	0	1
COUNTY TOTAL:	32	3	3	0	20	5	0	31
PEPIN COUNTY								
DURAND PD	0	0	0	0	0	0	0	0
PEPIN CO SO	5	1	0	0	0	1	0	2
PEPIN PD	2	0	0	0	1	1	0	2
COUNTY TOTAL:	7	1	0	0	1	2	0	4
PIERCE COUNTY								
ELLSWORTH PD	0	0	0	0	0	0	0	0
PIERCE CO SO	0	0	0	0	0	0	0	0
PRESCOTT PD	0	1	0	0	0	0	0	1
RIVER FALLS PD	8	1	0	0	13	2	0	16
COUNTY TOTAL:	8	2	0	0	13	2	0	17
POLK COUNTY								
AMERY PD	0	0	0	0	1	0	0	1
FREDERIC PD	1	0	0	0	9	0	0	9
OSCEOLA PD	0	0	0	0	0	0	0	0
POLK CO SO	16	3	0	1	6	1	0	11
ST CROIX FALLS PD	0	0	0	0	0	0	0	0
COUNTY TOTAL:	17	3	0	1	16	1	0	21
PORTAGE COUNTY								
PLOVER PD	1	5	1	0	3	0	0	9
PORTAGE CO SO	18	6	1	0	11	3	0	21
STEVENS POINT PD	38	8	2	1	10	8	0	29
UW-STEVENS POINT	0	0	0	0	0	0	0	0
COUNTY TOTAL:	57	19	4	1	24	11	0	59
PRICE COUNTY								
PARK FALLS PD	2	0	0	0	4	0	1	5
PHILLIPS PD	3	0	1	0	3	0	0	4
PRICE CO SO	0	0	0	0	0	0	0	0
COUNTY TOTAL:	5	0	1	0	7	0	1	9

	Total 2001	Forcible Rape	Forcible Sodomy	Assault w/ Object	Forcible Fondling	Statutory Rape	Ejac./Excrete Upon Victim	Total 2002
RACINE COUNTY								
BURLINGTON PD	14	2	0	0	0	3	0	5
BURLINGTON TOWN PD	0	0	0	0	0	0	0	0
CALEDONIA PD	12	0	0	0	2	3	0	5
MT. PLEASANT PD	7	9	0	0	6	7	0	22
RACINE CO SO	30	3	2	0	30	12	1	48
RACINE PD	108	26	18	4	89	5	0	142
STURTEVANT PD	0	1	0	0	1	0	0	2
COUNTY TOTAL:	171	41	20	4	128	30	1	224
RICHLAND COUNTY								
RICHLAND CENTER PD	11	1	0	0	3	0	0	4
RICHLAND CO SO	0	0	0	0	0	0	0	0
COUNTY TOTAL:	11	1	0	0	3	0	0	4
ROCK COUNTY								
BELOIT PD	41	17	8	4	29	10	0	68
BELOIT TOWN PD	6	1	0	0	0	0	0	1
CLINTON PD	0	0	0	0	0	0	0	0
EDGERTON PD	0	0	0	0	0	0	0	0
EVANSVILLE PD	0	1	0	0	0	0	0	1
JANESVILLE PD	118	15	12	6	67	7	0	107
MILTON PD	3	0	0	0	0	0	0	0
ROCK CO SO	22	6	1	2	15	3	0	27
COUNTY TOTAL:	190	40	21	12	111	20	0	204
RUSK COUNTY								
LADYSMITH PD	1	0	0	0	1	5	0	6
RUSK CO SO	0	1	0	0	0	1	0	2
COUNTY TOTAL:	1	1	0	0	1	6	0	8
SAUK COUNTY								
BARABOO PD	5	0	0	0	0	0	0	0
LAKE DELTON PD	10	2	0	0	1	0	0	3
REEDSBURG PD	10	1	0	0	25	4	0	30
SAUK CO SO	31	1	2	0	20	6	0	29
SAUK-PRAIRIE PD	1	0	0	0	3	0	0	3
SPRING GREEN PD	1	2	0	0	0	0	0	2
COUNTY TOTAL:	58	6	2	0	49	10	0	67
SAWYER COUNTY								
HAYWARD PD	1	0	0	0	1	1	0	2
SAWYER CO SO	4	4	1	0	5	1	1	12
COUNTY TOTAL:	5	4	1	0	6	2	1	14
SHAWANO COUNTY								
SHAWANO CO SO	31	6	1	0	24	13	0	44
SHAWANO PD	7	5	3	0	16	9	0	33
COUNTY TOTAL:	38	11	4	0	40	22	0	77

	Total 2001	Forcible Rape	Forcible Sodomy	Assault w/ Object	Forcible Fondling	Statutory Rape	Ejac./Excrete Upon Victim	Total 2002
SHEBOYGAN COUNTY								
ELKHART LAKE PD	0	0	0	0	0	0	0	0
KOHLER PD	0	0	0	0	0	0	0	0
PLYMOUTH PD	10	1	1	0	5	3	0	10
SHEBOYGAN CO SO	16	2	0	0	13	0	0	15
SHEBOYGAN FALLS PD	1	1	0	0	0	0	0	1
SHEBOYGAN PD	95	36	11	0	84	16	0	147
COUNTY TOTAL:	122	40	12	0	102	19	0	173
ST. CROIX COUNTY								
HUDSON PD	4	0	1	0	5	0	0	6
NEW RICHMOND PD	4	0	3	0	7	3	0	13
NORTH HUDSON PD	0	1	0	0	0	1	0	2
SOMERSET PD	0	0	0	0	0	0	0	0
ST. CROIX CO SO	23	3	3	7	23	5	0	41
COUNTY TOTAL:	31	4	7	7	35	9	0	62
TAYLOR COUNTY								
MEDFORD PD	1	2	0	0	1	5	0	8
TAYLOR CO SO	10	5	0	0	2	0	0	7
COUNTY TOTAL:	11	7	0	0	3	5	0	15
TREMPEALEAU COUNTY								
ARCADIA PD	0	0	0	0	0	0	0	0
BLAIR PD	3	1	1	0	3	0	0	5
ELEVA PD	0	0	0	0	0	0	0	0
INDEPENDENCE PD	0	0	0	0	0	0	0	0
OSSEO PD	3	0	0	1	0	0	0	1
STRUM PD	0	0	0	0	0	0	0	0
TREMPEALEAU CO SO	23	0	2	1	16	6	0	25
TREMPEALEAU PD	0	0	0	0	0	0	0	0
WHITEHALL PD	4	0	0	0	0	0	0	0
COUNTY TOTAL:	33	1	3	2	19	6	0	31
VERNON COUNTY								
HILLSBORO PD	0	0	0	0	0	0	0	0
VERNON CO SO	11	0	1	0	9	2	0	12
VIROQUA PD	2	0	0	0	0	0	0	0
WESTBY PD	0	0	0	0	2	0	0	2
COUNTY TOTAL:	13	0	1	0	11	2	0	14
VILAS COUNTY								
EAGLE RIVER PD	0	0	0	0	0	3	0	3
LAC DU FLAMBEAU TRIBAL	7	0	1	1	5	3	0	10
VILAS CO SO	17	5	0	1	5	6	0	17
COUNTY TOTAL:	24	5	1	2	10	12	0	30

	Total 2001	Forcible Rape	Forcible Sodomy	Assault w/ Object	Forcible Fondling	Statutory Rape	Ejac./Excrete Upon Victim	Total 2002
WALWORTH COUNTY								
BLOOMFIELD PD	1	1	0	0	0	0	0	1
DARIEN VILLAGE PD	0	0	0	0	0	0	0	0
DELAVAN PD	1	1	0	0	0	0	0	1
DELAVAN TOWN PD	5	2	0	0	1	0	0	3
EAST TROY PD	1	0	0	0	1	1	0	2
EAST TROY TOWN PD	0	0	0	0	2	1	0	3
ELKHORN PD	5	3	2	0	11	3	0	19
FONTANA PD	1	1	1	0	0	0	0	2
GENEVA TOWN PD	0	0	0	0	0	0	0	0
GENOA CITY PD	0	0	0	0	0	0	0	0
LAKE GENEVA PD	5	2	2	0	4	2	0	10
UW-WHITEWATER	2	0	0	0	3	0	0	3
WALWORTH CO SO	18	7	0	0	14	1	1	23
WALWORTH PD	0	1	0	0	1	0	0	2
WHITEWATER PD	20	3	0	1	2	3	0	9
WILLIAMS BAY PD	0	0	0	0	0	0	0	0
COUNTY TOTAL:	59	21	5	1	39	11	1	78
WASHBURN COUNTY								
SPOONER PD	1	1	0	0	0	0	0	1
WASHBURN CO SO	4	4	0	0	0	0	0	4
COUNTY TOTAL:	5	5	0	0	0	0	0	5
WASHINGTON COUNTY								
GERMANTOWN PD	9	1	1	0	8	2	0	12
HARTFORD PD	0	1	0	0	3	4	0	8
JACKSON PD	2	2	1	0	1	0	0	4
KEWASKUM PD	2	1	0	0	4	0	0	5
SLINGER PD	3	4	2	0	2	0	0	8
WASHINGTON CO SO	29	6	10	0	17	3	2	38
WEST BEND PD	12	1	0	0	17	0	0	18
COUNTY TOTAL:	57	16	14	0	52	9	2	93

	Total 2001	Forcible Rape	Forcible Sodomy	Assault w/ Object	Forcible Fondling	Statutory Rape	Ejac./Excrete Upon Victim	Total 2002
WAUKESHA COUNTY								
BROOKFIELD PD	0	1	0	0	1	0	0	2
BROOKFIELD TOWN PD	1	4	0	0	0	0	0	4
BUTLER PD	1	3	0	0	0	0	0	3
CHENEQUA PD	0	0	0	0	0	0	0	0
DELAFIELD PD	0	0	0	0	0	0	0	0
EAGLE PD	0	0	0	0	0	0	0	0
ELM GROVE PD	0	2	0	0	0	0	0	2
HARTLAND PD	2	0	0	0	0	0	0	0
MENOMONEE FALLS PD	11	2	1	0	1	0	0	4
MUKWONAGO PD	6	1	1	0	6	1	0	9
MUSKEGO PD	4	0	1	0	4	3	0	8
NEW BERLIN PD	14	0	6	0	12	3	1	22
OCONOMOWOC PD	2	5	0	0	4	10	0	19
OCONOMOWOC TOWN PD	3	0	0	0	2	0	0	2
PEWAUKEE CITY PD	2	0	0	0	3	0	0	3
PEWAUKEE PD	4	1	0	0	1	1	0	3
SUMMIT PD	0	0	0	0	0	0	0	0
WAUKESHA CO SO	31	1	3	0	17	3	0	24
WAUKESHA PD	76	8	9	3	36	21	1	78
COUNTY TOTAL:	157	28	21	3	87	42	2	183
WAUPACA COUNTY								
CLINTONVILLE PD	4	0	0	0	0	0	0	0
MARION PD	1	0	0	0	0	0	0	0
NEW LONDON PD	9	0	0	6	6	1	0	13
WAUPACA CO SO	31	4	1	3	19	5	1	33
WAUPACA PD	0	1	0	0	0	0	0	1
COUNTY TOTAL:	45	5	1	9	25	6	1	47
WAUSHARA COUNTY								
WAUSHARA CO SO	14	2	3	1	2	4	0	12
WAUTOMA PD	1	0	0	0	1	0	0	1
COUNTY TOTAL:	15	2	3	1	3	4	0	13
WINNEBAGO COUNTY								
MENASHA PD	26	3	3	0	16	4	0	26
MENASHA TOWN PD	3	5	1	0	4	1	0	11
NEENAH PD	29	2	4	0	11	8	1	26
OMRO PD	0	0	0	0	0	0	0	0
OSHKOSH PD	42	9	12	0	50	24	0	95
UW-OSHKOSH	4	3	1	0	0	1	0	5
WINNEBAGO CO SO	16	2	2	0	11	4	0	19
WINNECONNE PD	0	0	0	0	0	0	0	0
COUNTY TOTAL:	120	24	23	0	92	42	1	182
WOOD COUNTY								
GRAND RAPIDS PD	0	0	0	0	0	0	0	0
MARSHFIELD PD	12	5	1	1	8	0	2	17
WISCONSIN RAPIDS PD	26	4	3	2	39	6	0	54
WOOD CO SO	28	0	0	0	28	2	0	30
COUNTY TOTAL:	66	9	4	3	75	8	2	101
State Totals:	4,833	1,223	651	158	2,702	1,065	23	5,822

APPENDIX A

DATA COLLECTION AND INTERPRETATION

The assaults described and analyzed in this report are those reported to law enforcement agencies for the period of January 1, 2002 to December 31, 2002. The data are submitted to the Statistical Analysis Center (SAC) as part of the monthly UCR report of law enforcement agencies. Data is collected on the Wisconsin Sexual Assault Form which is reproduced in **Appendix D**. As with any sensitive crime, actual reports of offenses to law enforcement agencies may not be totally representative of all assaults committed. Assaults not reported to law enforcement agencies cannot be addressed in this report, even though they may be reported to other agencies such as social services or medical agencies.

In this report an incident is defined as one assault against one victim. A series of assaults against one person which constitutes one “clear and distinct criminal operation” is counted as one offense. An example of an ongoing incident is where an assault situation is repeated over several months or years against the same victim.

The data in this report focuses on all reported cases, regardless of the eventual disposition of the cases by the law enforcement agency or the court. The factual accuracy of these reported assaults and the circumstances surrounding them have, in a legal sense, not been substantiated.

APPENDIX B

SEXUAL ASSAULT DEFINITIONS

Sexual assaults encompass a wide range of incidents, from violent rapes to less physically injurious sexual contact. While the nature of victim impact connected to an assault is related to a number of factors, such as the extent of the victim's trauma, physical injuries, and so forth, these are not always easily measured. The nature of victim impact connected to the assault is also defined, to some degree, by the six offense categories utilized in the Uniform Crime Reporting - Incident-Based Reporting system, as defined below:

Forcible Rape:

Vaginal intercourse with a person, forcibly and/or against that person's will, or where the victim was incapable of giving consent because of his/her youth or temporary or permanent mental or physical incapacity.

Forcible Sodomy:

Oral or anal sexual intercourse with another person, forcibly and/or against that person's will, or where the victim was incapable of giving consent because of his/her youth or temporary or permanent mental or physical incapacity.

Sexual Assault with an Object:

The use of an object or instrument to unlawfully penetrate the genital or anal opening of the body of another person forcibly and/or against that person's will, or where the victim was incapable of giving consent because of his/her youth or temporary or permanent mental or physical incapacity.

Note: An "object" or "instrument" is anything used by the offender other than the offender's genitalia. Examples include a finger, bottle, handgun, stick, etc.

Forcible Fondling:

The touching of the private body parts of another person for the purpose of sexual gratification or victim humiliation, forcibly and/or against that person's will, or where the victim was incapable of giving consent because of his/her youth or temporary or permanent mental or physical incapacity. *Note:* Forcible Fondling includes "Indecent Liberties" and "Child Molesting." Although "force" may not have been used, offenses may fall into this category because the victim was incapable of giving consent, or did not give consent.

Statutory Rape:

Sexual intercourse with a person who is under the statutory age of consent. In Wisconsin no unmarried juvenile can give consent to sexual intercourse. Only when the victim is *under 16 years of age* is intercourse defined as a *sexual assault* (note that both parties would be offenders and victims in an assault if they are both under age 16). *Note:* If force was used or threatened, the offense should be classified as Forcible Rape, not Statutory Rape. A code of Statutory Rape implies that the victim has the ability/knowledge to give consent. Sexual activity involving a child 10 or under should always be recorded as forcible. Sexual activity involving older child victims should be carefully reviewed to determine whether they could have given reasonably informed consent.

Ejaculate/Excrete Upon Victim:

Intentional penile ejaculation or the emission of urine or feces by the offender upon any part of the body of the victim, for the purpose of sexually degrading or sexually humiliating the victim or for the purpose of sexually arousing or gratifying the offender. This category of assault was added to Wisconsin Statutes in 1996. It is not a category of the national (FBI) Incident-Based Reporting System.

APPENDIX C SEXUAL ASSAULT STATUTES

940.225 SEXUAL ASSAULT

- (1) *First Degree Sexual Assault.* Whoever does any of the following is guilty of a Class B felony:
 - (a) Has sexual contact or sexual intercourse with another person without consent of that person and causes pregnancy or great bodily harm to that person.
 - (b) Has sexual contact or sexual intercourse with another person without consent of that person by use or threat of use of a dangerous weapon or any article used or fashioned in a manner to lead the victim reasonably to believe it to be a dangerous weapon.
 - (c) Is aided or abetted by one or more other persons and has sexual contact or sexual intercourse with another person without consent of that person by use or threat of force or violence.

- (2) *Second Degree Sexual Assault.* Whoever does any of the following is guilty of a Class BC felony:
 - (a) Has sexual contact or sexual intercourse with another person without consent of that person by use or threat of force or violence.
 - (b) Has sexual contact or sexual intercourse with another person without consent of that person and causes injury, illness, disease or impairment of a sexual or reproductive organ, or mental anguish requiring psychiatric care for the victim.
 - (c) Has sexual contact or sexual intercourse with a person who suffers from a mental illness or deficiency which renders that person temporarily or permanently incapable or appraising the person's conduct, and the defendant knows of such condition.
 - (d) Has sexual contact or sexual intercourse with a person who the defendant knows is unconscious.
 - (f) Is aided or abetted by one or more other persons and has sexual contact or sexual intercourse with another person without the consent of that person.
 - (g) Is an employe of a facility or program under s. 940.295 (2)(b), (c), (h) or (k) and has sexual contact or sexual intercourse with a person who is a patient or resident of the facility or program.

- (3) *Third Degree Sexual Assault.* Whoever has sexual intercourse with a person without the consent of that person is guilty of a Class D felony. Whoever has sexual contact in the manner described in sub. (5)(b)2 with a person without the consent of that person is guilty of a Class D felony.

- (3m) *Fourth Degree Sexual Assault.* Except as provided in sub. (3), whoever has sexual contact with a person without the consent of that person is guilty of a Class A misdemeanor.

- (4) *Consent.* "Consent," as used in this section, means words or overt actions by a person who is competent to give informed consent indicating a freely given agreement to have sexual intercourse or sexual contact. Consent is not an issue in alleged violations of sub. (2)(c), (d), and (g). The following persons are presumed incapable of consent but the presumption may be rebutted by competent evidence, subject to the provisions of s. 972.11(2).
 - (b) A person suffering from a mental illness or defect which impairs capacity to appraise personal conduct.
 - (c) A person who is unconscious or for any other reason is physically unable to communicate unwillingness to an act.

(5) *Definitions.* In this section:

(ag) "Inpatient facility" has the meaning designated in s. 51.01 (10).

(am) "Patient" means any person who does any of the following:

1. Receives care or treatment from a facility or program under s. 940.295 (2)(b), (c), (h) or (k), from an employe of a facility or program or from a person providing services under contract with a facility or program.
2. Arrives at a facility or program under s. 940.295 (2)(b), (c), (h) or (k) for the purpose of receiving care or treatment from a facility or program under s. 940.295 (2)(b), (c), (h) or (k), from an employe of a facility or program under s. 940.295 (2)(b), (c), (h) or (k), or from a person providing services under contract with a facility or program under s. 940.295 (2)(b), (c), (h) or (k).

(ar) "Resident" means any person who resides in a facility under s. 940.295 (2)(b), (c), (h) or (k)

(b) "Sexual contact" means any of the following:

1. Intentional touching by the complainant or defendant, either directly or through clothing by the use of any body part or object, of the complainant's or defendant's intimate parts if that intentional touching is either for the purpose of sexually degrading; or for the purpose of sexual humiliating the complainant or sexually arousing or gratifying the defendant or if the touching contains the elements of actual or attempted battery under s. 940.10 (1).
 2. Intentional penile ejaculation of ejaculate or intentional emission of urine or feces by the defendant upon any part of the body clothed or unclothed of the complainant if that ejaculation or emission is either for the purpose of sexually degrading or sexually humiliating the complainant or for the purpose of sexual arousing or gratifying the defendant.
- (c) "Sexual intercourse" includes the meaning assigned under s.939.22 (36) as well a cunnilingus, fellatio or anal intercourse between persons or any other intrusion, however slight, of any part of a person's body or of any object into the genital or any opening either by the defendant or upon the defendant's instruction. The emission of semen is not required.

(d) "State Treatment Facility" has the meaning designated in s. 51.01 (15).

(6) *Marriage Not a Bar to Prosecution.* A defendant shall not be presumed to be incapable of violating this section because of marriage to the complainant.

(7) *Death of Victim.* This section applies whether a victim is dead or alive at the time of the sexual contact or sexual intercourse.

948.02 SEXUAL ASSAULT OF A CHILD

(1) *First Degree Sexual Assault.* Whoever has sexual contact or sexual intercourse with a person who has not attained the age of 13 years is guilty of a Class B felony.

(2) *Second Degree Sexual Assault.* Whoever has sexual contact or sexual intercourse with a person who has not attained the age of 16 years is guilty of a Class BC felony.

SEXUAL ASSAULT FORM – CODING REFERENCE

Note: To be used in conjunction with complete coding instructions

1. **Incident number:** Your agency incident number for this offense
2. Attempted/Completed: **Offense** was: **A** – attempted **C** – completed **O** – ongoing
3. **Offense code:** **Sex Offense Forcible:**

1. – Forcible Rape	4. – Forcible Fondling	Sex Offenses Non-Forcible:
2. – Forcible Sodomy/Oral Sex	7. – Ejaculate/Excrete Upon Victim	6. – Statutory Rape (Consensual intercourse)
3. – Sexual Assault With An Object		
4. **Return A Line Number:** Indicate the line number on Return A where this sexual assault was reported for UCR purposes (Usually 2A – 2B or 4A – 4E). *If the offense is not appropriate for Return A, indicate NA.*
5. **Date of assault:** Use six digits (MMDDYY). If the assault is part of a series (e.g. an intra-family situation that has been going on for some time), record the date of the first assault.
6. **Time of assault:** Use 24-hour clock (e.g. 1530). Approximate if necessary.
7. **Date of report:** Use six digits (MMDDYY). Give date assault was reported to law enforcement.
8. **Degree of assault:** 1-4 (Wisconsin Statutes 940.225 and (1-2) 948.02)
9. **Age:** On case of ongoing assault situations, the age of the victim and the offender at the time of the first assault should be recorded.

NN – under 24 hours	BB – 7-364 days old	99 – over 98 years old
NB – 1-6 days old	01-98 – years old (exact age in years)	00 – unknown
10. **Sex:** M (male), F (female), U (unknown)
11. **Race:** W – white B – black A – Asian or Pacific Islander I – American Indian/Alaskan Native, U – unknown
12. **Weapon:**

11 – Firearm (type not specified)	20 – Knife/Cutting Instrument (ax, ice pick, screwdriver)	70 – Drugs/Narcotics/Pills
12 – Handgun	30 – Blunt Object (club, hammer, etc.)	90 – Other
13 – Rifle	40 – Personal Weapon (hands, feet, teeth)	95 – Unknown
14 – Shotgun	50 – Poison (includes gas)	99 – None
15 – Other Firearm	65 – Fire/Incendiary Device	
13. **Victim Injuries:**

1 – None	4 – Severe Laceration	7 – Loss of Teeth
2 – Apparent Broken Bones	5 – Apparent Minor Injury	8 – Unconsciousness (due to injury)
3 – Possible Internal Injury	6 – Other Major Injury	9 – Death
14. **Location:**

03 – Bar/Night Club	90 – Park
04 – Church/Synagogue/Temple (other religious bldg.)	91 – Victim’s Vehicle
09 – Drug Store/Dr.’s Office/Hospital (medical supply bldg.)	92 – Offender’s Vehicle
10 – Field/Woods	93 – Other Vehicle
13 – Highway/Road/Alley (street)	94 – Victim Temporary Lodgings (includes hotel/motel)
15 – Jail/Prison/Detention Center (24-hour supervision)	95 – Offender Temporary Lodgings (includes hotel/motel)
18 – Parking Lot/Garage	96 – Other Temporary Lodgings (includes hotel/motel)
22 – School/College/University	97 – Victim Residence (house, apt., condo)
25 – Other/Unknown	98 – Offender Residence (house, apt., condo)
28 – Residential Facility (nursing, group home, hospital)	99 – Other Residence (house, apt., condo)
15. **Offender Outcome:**

N – No Offender Arrested for this Offense	Case Cleared Exceptionally by:	
1 – This Offender Arrested	3 – Death of Offender	6 – Victim Refused to Cooperate/Prosecute
2 – Other Offender (but not this one) Arrested	4 – Prosecution Declined	7 – Juvenile/No Custody
	5 – Extradition Denied	
16. **Law Enforcement Disposition of Arrested Offenders:**

1 – Handled within Department and released	4 – Referred to criminal court/prosecution
2 – Referred to counseling or social service agency	5 – Referred to other police agency
3 – Referred to juvenile court	6 – Other
	7 – Disposition information not available
17. **Relationship of Victim to Offender:**

1 – Victim was Spouse	12 – Victim was Other Family	22 – Victim was Child of Boy/Girlfriend
2 – Victim was Common Law Spouse	13 – Victim Domestic Violence Victim	24 – Victim was Ex-Spouse
3 – Victim was Parent	14 – Victim was Co-habitant (i.e. lover)	25 – Victim was Professional Care Provider
4 – Victim was Sibling	15 – Victim was Roommate (i.e. roommate)	26 – Victim was Professional Care Receiver
5 – Victim was Child	16 – Victim was Acquaintance	27 – Victim was Employee
6 – Victim was Grandparent	17 – Victim was Friend	28 – Victim was Employer
7 – Victim was Grandchild	18 – Victim was Neighbor	29 – Other Business Relationship
8 – Victim was In-Law	19 – Victim was Babysittee (the baby)	30 – Victim was Otherwise Known
9 – Victim was Stepparent	20 – Victim was Babysitter	Not Known by Victim:
10 – Victim was Stepchild	21 – Victim was Boyfriend/Girlfriend	98 – Relationship Unknown
11 – Victim was Stepsibling	31 – Victim was Ex-boyfriend/Girlfriend	99 – Victim was Stranger
18. **Unfounded:** Check if offense reported to you and later unfounded. If the offense was reported in a previous month, provide the month reported (in the comment section), incident number, date, and time of assault. Report all information in a current unfounded incident.

Published by the
Statistical Analysis Center
Wisconsin Office of Justice Assistance

131 W. Wilson St., Suite 610
Madison, WI 53702

Phone: (608) 266-3323

Fax: (608) 266-6676

www.oja.wi.gov