

TABLE OF CONTENTS

EXECUTIVE SUMMARY..... 2

Introduction..... 3

1. Jail Capacity and Staffing..... 4

2. Admission Trends..... 5

3. Admissions by Type..... 6

a. By Pretrial/Sentenced/State/Federal..... 6

b. By Sex..... 7

c. By Race..... 7

4. Average Length of Confinement and Average Daily Population (ADP)..... 8

5. Seventeen-year-olds in Adult Jails..... 8

Appendices..... 11

1. Wisconsin Jail Population – 2003 Survey..... 11

2. Total Reported Admissions by County..... 13

3. Reported Average Length of Confinement by County 2003..... 15

4. Reported Average Length of Confinement by County 2001 – 2003..... 16

5. Reported Average Daily Population (ADP) 2001 – 2003..... 18

EXECUTIVE SUMMARY

- Statewide jail capacity is estimated to have increased nearly 30 percent from 13,753 in 2001 to 17,805 in 2003, with a nearly 16 percent increase occurring between 2002 and 2003.
- The percentage of beds available to work release admissions has increased about four percent between 2001 and 2003 and about three percent between 2002 and 2003.
- The average number of prisoners (in any bed--regular or work release) per jail staff person has increased slightly from 4 inmates to each jail staff person in 2001 to 4.3 inmates per jail staff in 2003.
- Admissions have increased an estimated four percent between 2001 and 2003, with most of the increase (just over three percent) occurring between 2001 and 2002.
- The number of admissions held by one county for another county is relatively small, but has increased substantially; the percentage doubled from three percent of reported admissions in 2001 and 2002 to six percent of reported admissions in 2003.
- Approximately half of admissions involved individuals before trial or court case disposition (referred to as Pretrial) in all three years.
- Proportions of admissions by sex have remained relatively constant; the share of female admissions has increased one percent from 2001 to 2003.
- Proportions of admissions by race have remained relatively constant; the share of White admissions has increased one percent and the share of Black admissions has decreased one percent from 2001 to 2003.
- While a statewide average length of confinement and average daily population are difficult to estimate due to low response rates for these questions, individual jail data is presented for those jails that responded (see Appendices 3 and 4).
- In 2003, the share of 17-year-old admissions that are Pretrial and admissions held for another county rose slightly (two percent) while the share of Sentenced admissions fell slightly (three percent).
- The proportion of male and female admissions has not changed for 17-year-olds between 2002 and 2003.
- The share of 17-year-old admissions that are Native American and Asian declined slightly between 2002 and 2003, while the share of admissions that are Black has increased five percent.
- Public Order Crime is the most common type of crime for 17-year-old admissions in both 2002 and 2003. Between 2002 and 2003, the percentage of Violent Crimes and Other Crimes decreased slightly (two to four percent), while Public Order and Property Crime have gone up slightly (one to five percent).
- Seventeen-year-old admissions make up about the same share of total admissions in both 2002 and 2003 (about 5 percent).
- Nearly half of all 17-year-old admissions are housed in a county outside the county where the crime was committed in both 2002 and 2003.

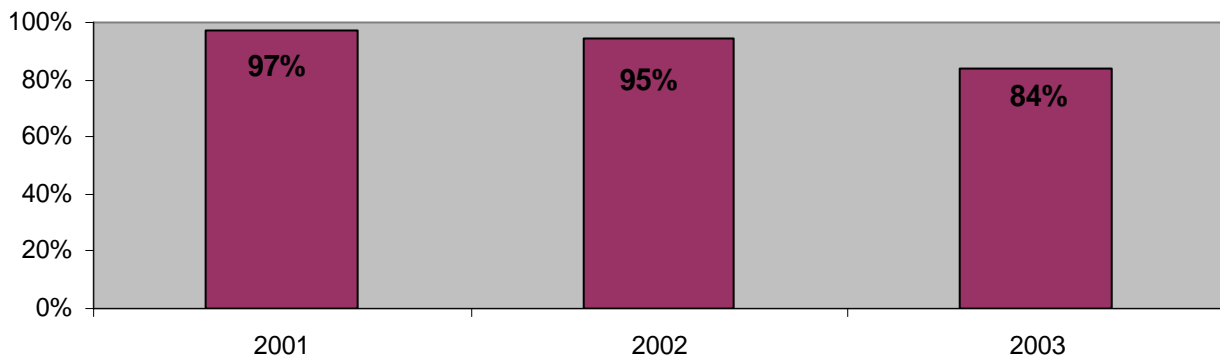
Introduction

In the first quarter of each year (beginning in 2001), the Statistical Analysis Center (SAC) of the Office of Justice Assistance (OJA) surveys Wisconsin's adult jails to obtain basic information from the previous year such as jail capacity, admissions, average length of confinement and average daily population. This is a summary report of answers provided by jail administrators or their staffs regarding Wisconsin adults confined in local correctional facilities between 2001 and 2003.

This report presents aggregated statewide data as well as individual jail data. Missing data is estimated whenever possible. Data are derived from a simple survey instrument (see Appendix 1). The degree of detail in this report is limited to the information requested on the survey.

The report is not a census of the statewide jail population. The accuracy and completeness of this report depend on all jails responding to the survey. The graph below shows the percentage of counties responding to the 2001 to 2003 surveys. The response rate for 2003 is the lowest of the last three years.

Percentage of Jails Reporting Admissions by Year 2001-2003

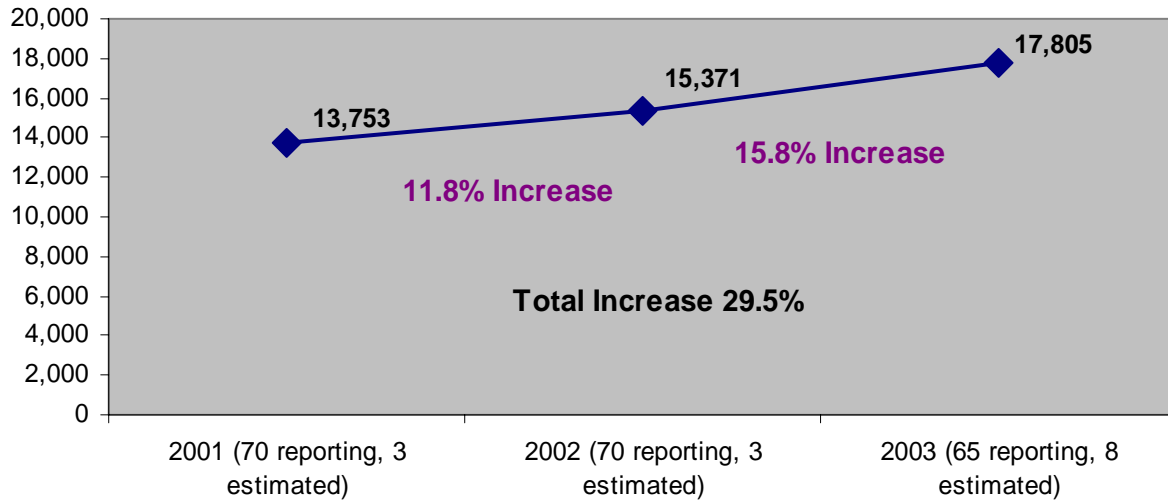


When a jail does not respond in a year (after at least two email and/or telephone attempts to obtain the data) or a jail does not provide complete information, the jail's data must be estimated in order for it to be compared across years and so that statewide totals can be estimated. For simplicity, missing data are generally filled in with the previous year's data. While not providing precise statewide numbers, it at least provides a basis for comparison statewide over time.

1. Jail Capacity and Staffing

Statewide jail capacity is estimated to have increased nearly 30 percent from 13,753 in 2001 to 17,805 in 2003, with a nearly 16 percent increase occurring between 2002 and 2003. The estimate for 2003 consists of 65 counties' reported 2003 capacity and 8 counties' reported 2002 capacity.

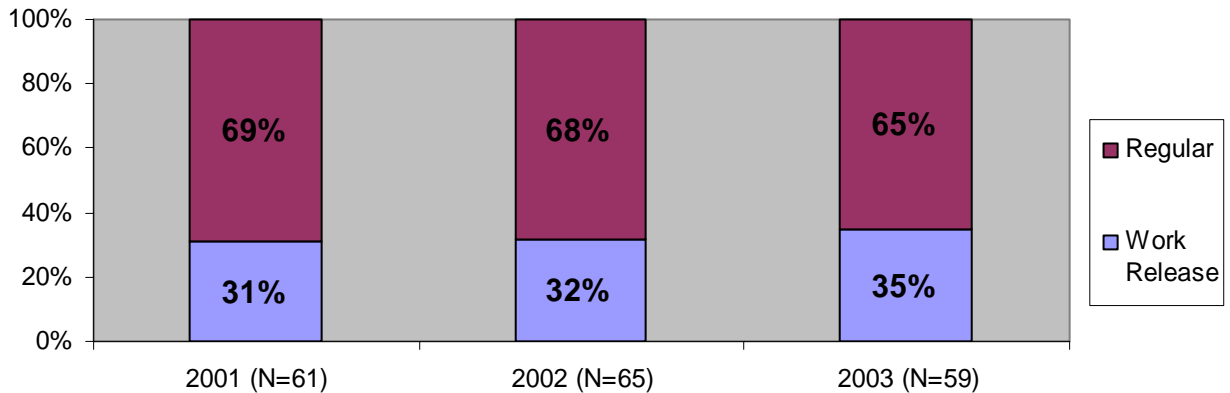
Estimated Capacity Statewide 2001 - 2003



Reported capacity is used if available; if not available, the previous year's reported capacity is used as an estimate.

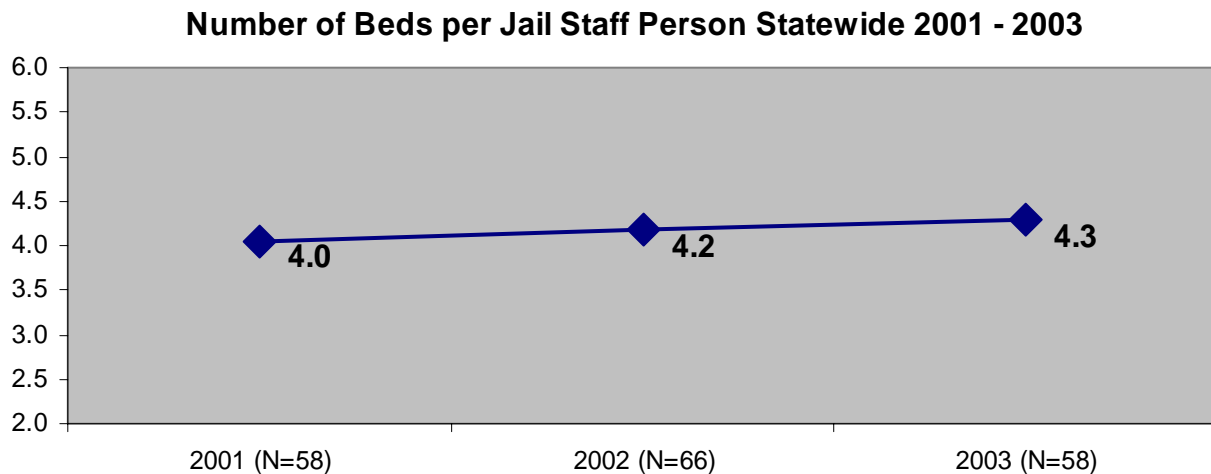
The percentage of beds reported to be dedicated to work release admissions (known as Huber privileges) has increased about four percent between 2001 and 2003 and about three percent between 2002 and 2003. Because of low numbers of responses to this question in all three years, these results may not be typical of counties statewide.

Percentage of Beds Available by Type Statewide 2001 - 2003



Percentages based on the number of beds identified as regular or work release, which many times was less than reported capacity.

Reported capacity and staff numbers show that the average number of prisoners (in any bed--regular or work release) per jail staff person has increased slightly from 2001 to 2003 (from 4 inmates to each jail staff person in 2001 to 4.3 inmates per jail staff in 2003).¹ There are low response rates in all three years for the questions of capacity and number of full-time staff.



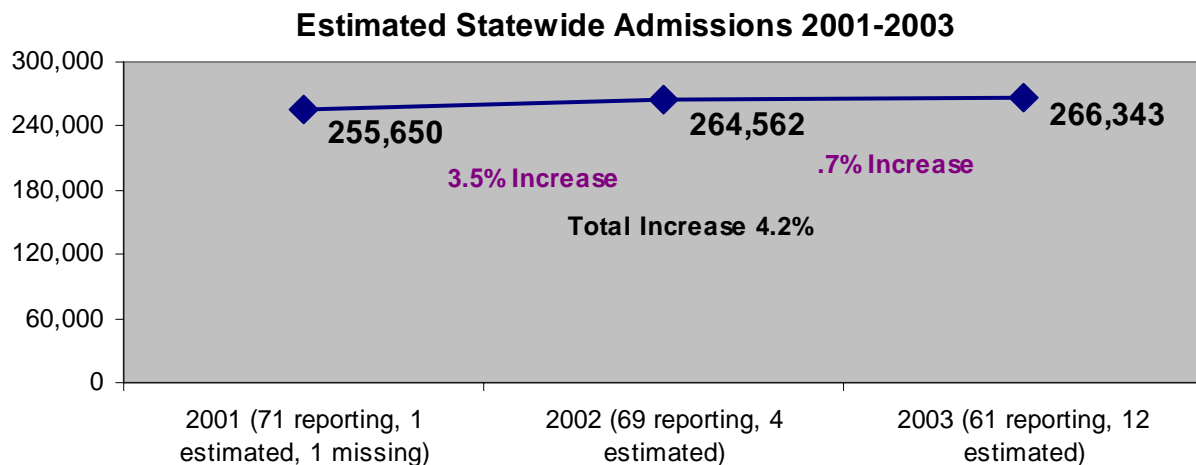
A jail is included only if both capacity and staff numbers are reported for the relevant year. If capacity numbers are not reported in a year, staff numbers tend to be missing as well.

2. Admission Trends

Since some jails in each year did not report admissions, statewide jail admissions must be estimated. According to this estimate², admissions have increased about four percent between 2001 and 2003, with most of the increase occurring between 2001 and 2002 (see Appendix 2 for individual jail data).

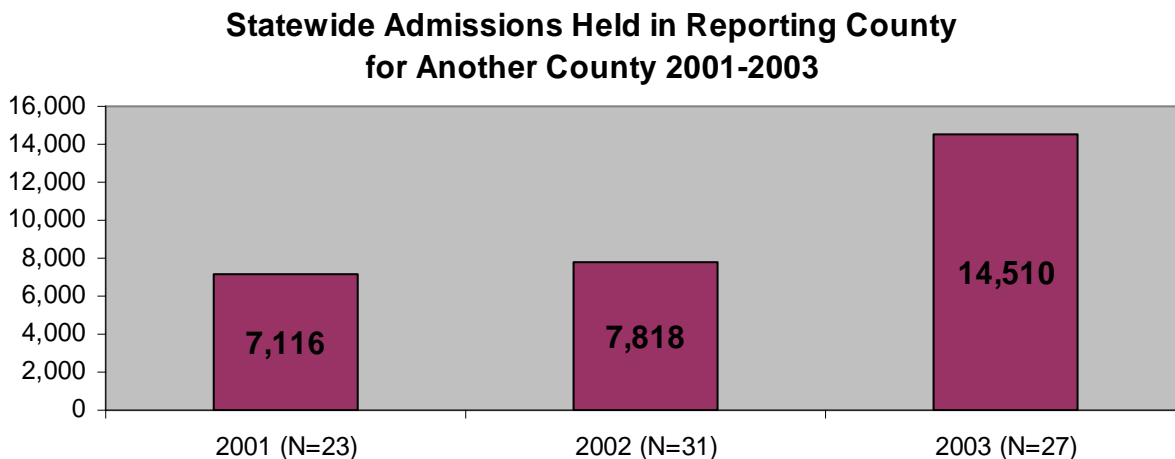
¹ Only data from jails that reported both capacity and staff numbers are used in these calculations.

² Missing admissions numbers in one year are filled in with reported admission numbers from the previous year.



Reported total admissions are used if available; if not available, the previous year's reported admissions are used as an estimate.

Included in the totals above are admissions held in one county on behalf of another county. The number of admissions held for another county is small, but has increased substantially; the percentage doubled from three percent of reported admissions in 2001 (7,116 out of 255,650) and 2002 (7,818 out of 264,562) to six percent of reported admissions in 2003 (14,510 out of 266,343). Counties with missing data may not have been able to access the numbers or may have had no prisoners housed for other counties during the year.

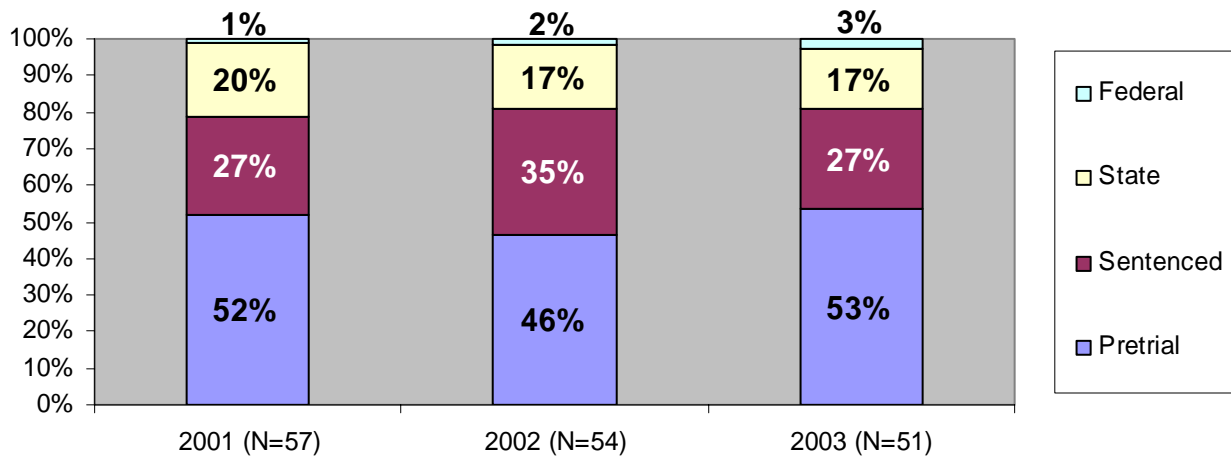


3. Admissions by Type

a. By Pretrial/Sentenced/State/Federal

The share of inmates from the Department of Corrections (referred to as State) has decreased slightly and the share of inmates from the Federal Bureau of Prisons (referred to as Federal) has increased slightly. In all three years, about half of admissions identified by type are held in jail before court trial or final court disposition (referred to as Pretrial).

Percentage of Admissions by Type of Admission 2001 - 2003

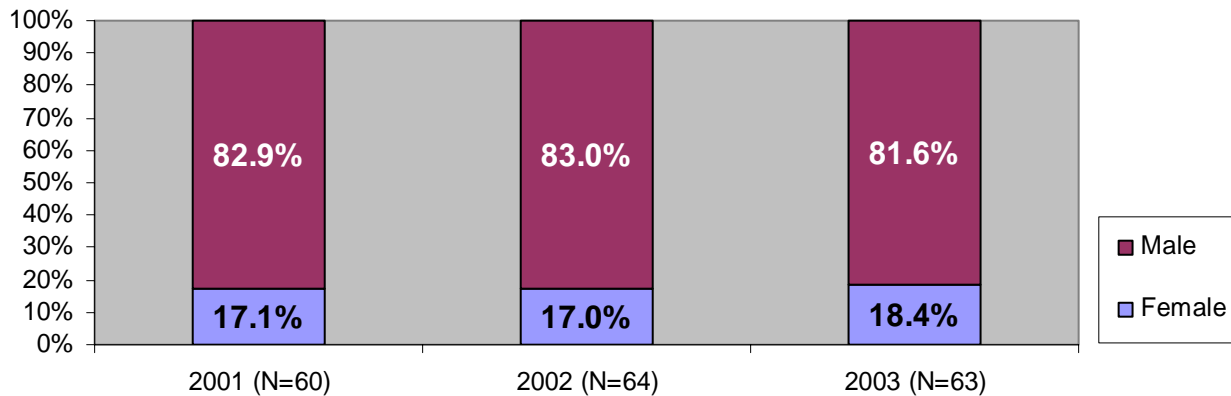


Percentages are based on the number of admissions identified by type, which often did not equal total admissions for that jail. In 2003 and in just over half of the counties, the admission types did not add to the total admissions.

b. By Sex

The proportion of female admissions increased slightly (1.4 percent) between 2002 and 2003.

Proportion of Males and Females 2001- 2003

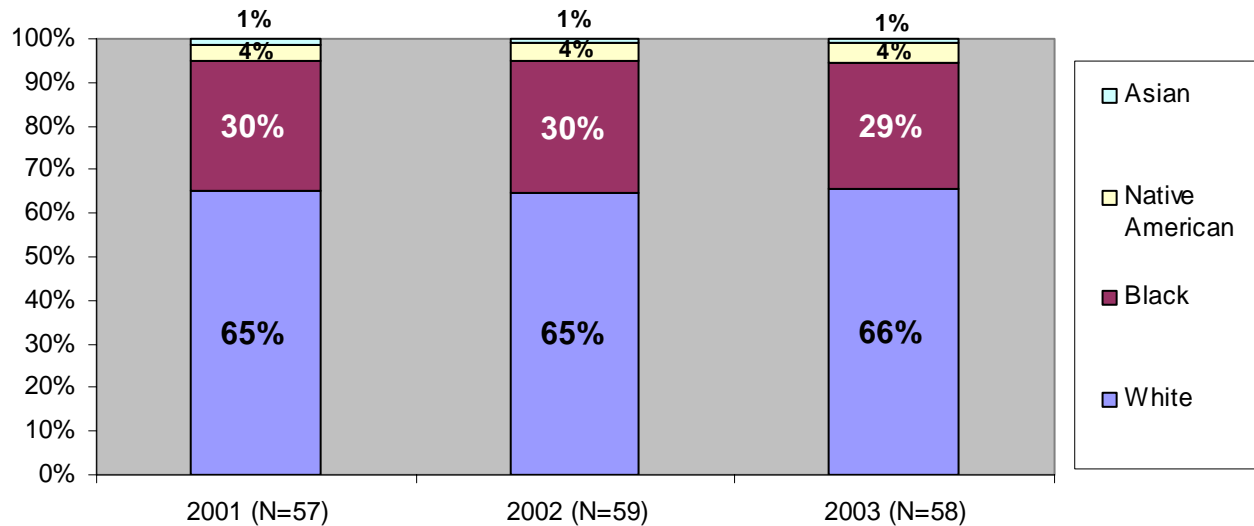


Percentages are based on the number of admissions identified by sex, which occasionally do not equal total admissions for that jail. Male and female admissions added together equal total admissions for 83 percent of jails that reported in 2003.

c. By Race

Proportions of admissions by race have remained relatively constant; the share of White admissions has increased one percent and the share of Black admissions has decreased one percent.

Proportion of Admissions by Race Statewide 2001-2003



4. Average Length of Confinement and Average Daily Population (ADP)

Average length of confinement is often missing or appears to be an estimate and not necessarily consistent with the jail’s reported capacity, total admissions and ADP. While a statewide average length of confinement and average daily population (total and ADP on electronic monitoring) are difficult to estimate due to a low number of responses for this question, individual jail data is available for those jails that responded (see Appendices 3 and 4).

Appendix 5 shows ADP for those counties that reported this information. There are cases in which the reported ADP is much less than or much greater than the capacity of the jail. The percentages of reporting jails with an ADP five or more over their capacity are 15 percent in 2001 and 16 percent in 2002 and 2003. In addition, the percentage of reporting jails with an ADP less than capacity by 50 or more is 19 percent in 2001, 24 percent in 2002 and 26 percent in 2003. This data, while incomplete, may be a sign of reporting error or it may be an indication of overcrowding or additional capacity.

5. Seventeen-year-olds in Adult Jails

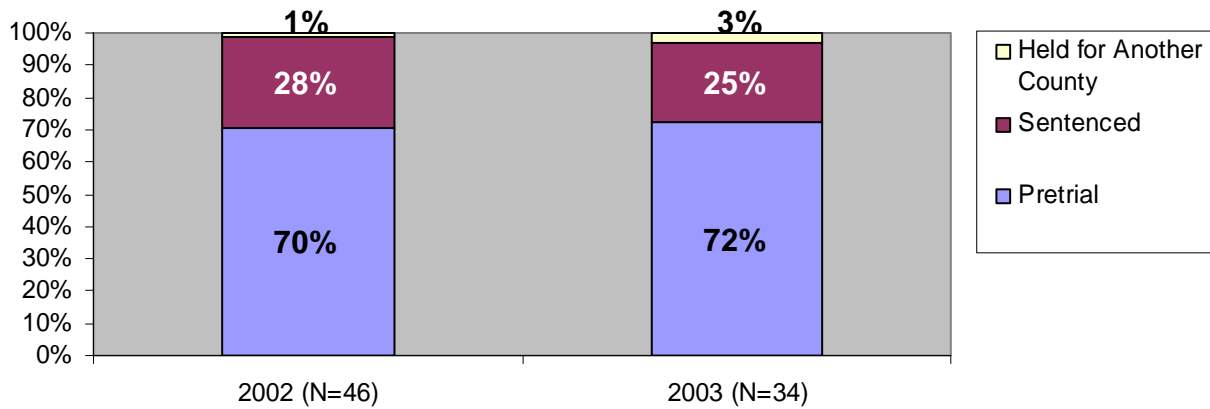
In 1996, there were changes in Wisconsin statutes that allowed most 17-year-olds to be incarcerated in adult county jails. In 2002, 57 jails report 13,868 admissions of 17-year-olds and in 2003, 47 jails report 11,075 admissions. This is about five percent of reported admissions in each year.³

In 2002 with 46 counties reporting, there are 7,634 admissions of individuals prior to court trial or disposition, 3,053 sentenced admissions and 159 admissions from another county. In 2003 with 34 counties reporting, there are 1,394 admissions of individuals prior to court trial or disposition, 475 sentenced admissions and 57 admissions from another county. Since the number of counties reporting in 2003 is significantly diminished from 2002, comparison is only possible by looking at share of admissions by type.

³ High-quality data are only available for 2002 and 2003.

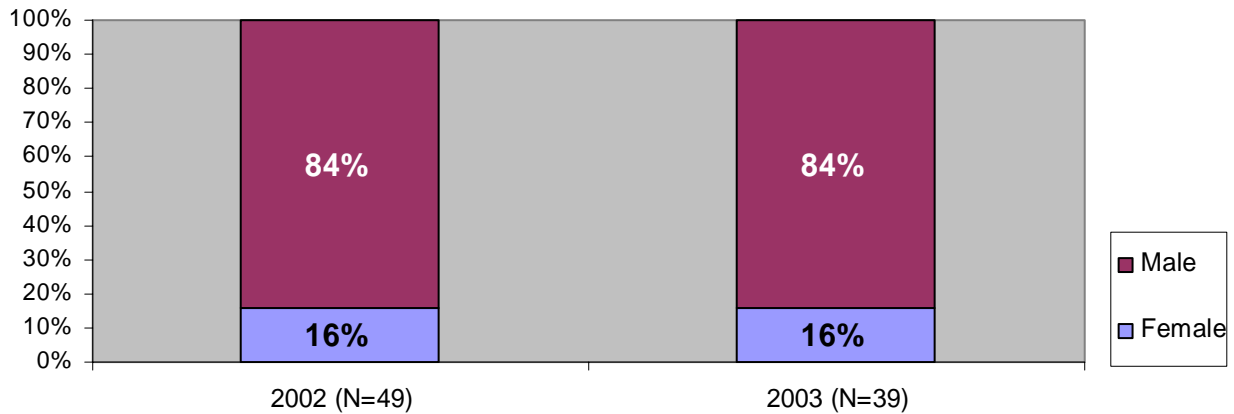
In 2003, the share of 17-year-old Pretrial admissions and admissions held for another county rose slightly (two percent) while the share of Sentenced admissions decreased slightly (three percent).

17-Year-Old Admissions by Type of Admission 2002 - 2003



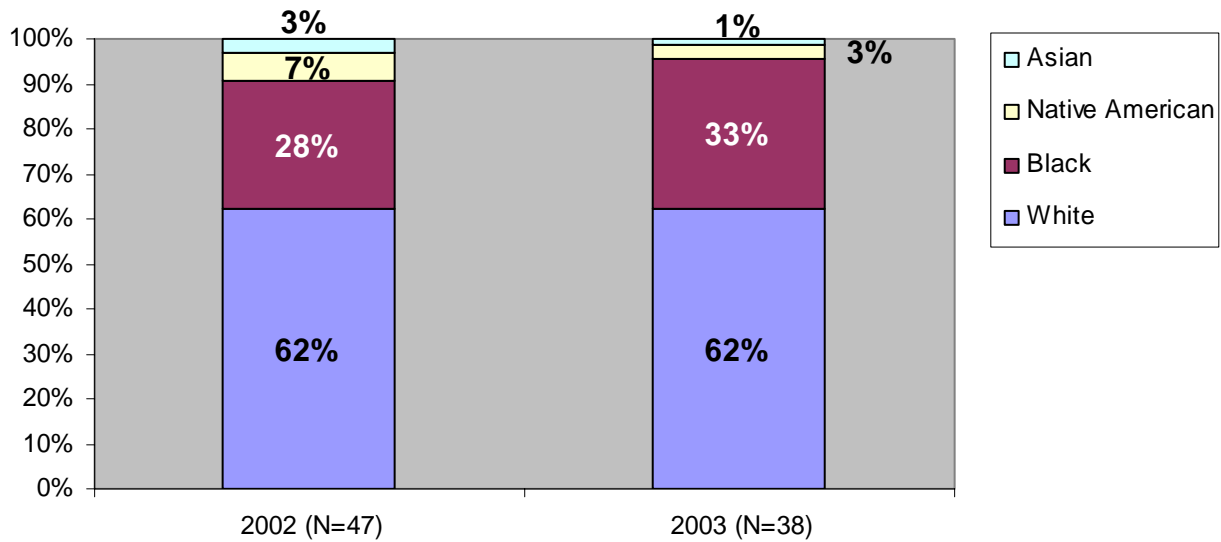
The proportion of reported male and female admissions has not changed for 17-year-olds between 2002 and 2003. However had all counties reported in 2003, these results may have been different.

17-Year-Old Admissions by Gender 2002 - 2003



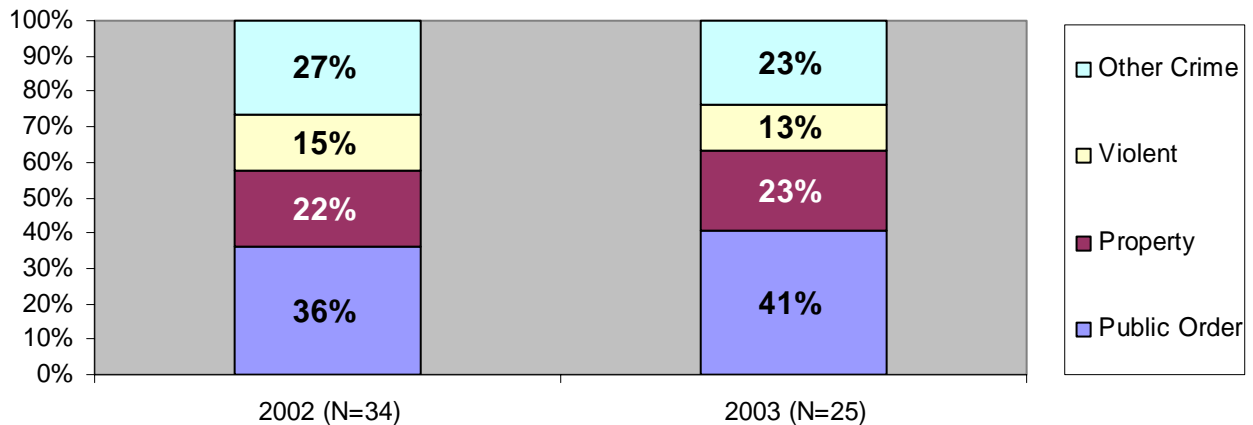
The shares of 17-year-old admissions that are Native American and Asian declined between 2002 and 2003, while the share of admissions that is Black has increased five percent.

17-Year-Old Admissions by Race 2002 - 2003



The largest share of 17-year-old admissions is for Public Order Crimes in both 2002 and 2003, followed by Other Crimes and Property Crimes. Between 2002 and 2003, the share of admissions for Violent Crimes and Other Crimes decreased slightly (two to four percent), while the share of admissions for Public Order and Property Crimes increased slightly (one to five percent).

17-Year-Old Admissions by Type of Crime



As previously stated, 17-year-old admissions make up about the same share of total admissions (about five percent) in both 2002 and 2003. Nearly half of all 17-year-old admissions are housed in a county outside the county where the crime was committed in both 2002 and 2003.

Statistics of 17-year-old Admissions

	2002 (N=57)	2003 (N=47)
Total Reported Admissions	259,090	230,505
Total Reported Admissions of 17-year-olds	13,868	11,075
17-Year-Old Admissions as Percentage of All Admissions	5.4%	4.8%
Percentage of all 17-year-old Admissions Housed in Another County	48%	46%
Total Reported 17-year-olds Housed in Another County	6,611	5,090

**Appendix 1:
WISCONSIN JAIL POPULATION - 2003 SURVEY**

Basis Information

County: _____ Total Rated Adult Capacity (exclude holding cells): _____
 Respondent: _____ (Regular _____ Huber _____)
 Telephone: _____ Does this rated capacity include double bunking?

Number of Full Time Jail Staff : _____
 (paid from law enforcement funds, both sworn and civilian. Please include dispatchers if they were also jailers).

Admission Information

Please provide as much of the following information as possible. Include all inmates admitted to your own facility for confinement, even if received from another county. However, do not include persons held at other facilities (see next page.) If numbers are not readily available , please use percentage estimates.

Total Adult Admissions in 2003: _____

<u>Type of Admission</u>	<u>Race</u>	<u>Sex</u>
<small>Number or %</small>	<small>Number or %</small>	<small>Number or %</small>
Pretrial _____	White _____	Male _____
Sentenced _____	Black _____	Female _____
State Prisoner (Include P&P) _____	Amer. Indian _____	
Federal Prisoner _____	Asian _____	

Total Admissions Housed for Other Counties in 2003 _____

Other Information

The following information should be based on **all** inmates held in **your own** county jail during 2003. Include information on inmates from other jurisdictions who are held at your jail. However, do not include the ADP or average confinement length for your county's inmates who are held in another county's facility.

Average Length of Confinement (in Days) _____
Total Average Daily Population (ADP) (see instructions) _____
ADP on Electronic Monitoring (included in total ADP above) _____
Any Jail Construction Plans for 2004 - 2005? _____

PLEASE TURN TO OTHER SIDE FOR FINAL QUESTIONS AND INSTRUCTIONS

Please provide as much of the following information as possible without resorting to any time-consuming manual search of your records

Seventeen Year-old Inmates

Total Confined _____

Subset -Type of Admission

Subset-Race

Pretrial	_____	White	_____	Amer. Indian	_____
Sentenced	_____	Black	_____	Asian	_____
For Other County	_____	Sex Male	_____	Female	_____

Most Serious Offense at Admission, if available (use either number or percentage)

Violent Crime _____ Property Crime _____ Public Order _____ Other _____

Your Inmates Held in Other Counties (if relevant)

Total Number Held _____ and/or Total Number of Days Held _____ Average Cost Per Day _____

Instructions for 2003 Jail Survey

Basis Information

When determining the rated capacity of your jail, **do not** include the capacity of holding cells.

Admission Information

Please remember to include all inmates who are admitted to your facility, even if received from another county. However, do not include inmates sentenced from your county who were never admitted to your facility after sentencing. "**State prisoners**" include both those held as part of a state/county contract and those held for reasons of a probation/parole revocation or hold. In terms of **type of admission** (pretrial, sentenced, etc.) please provide the total admissions by number or percent if either of these figures is readily available.

ADP Information

Again, remember to include ADP and other information on all inmates who are held in your facility, even if received from another county. Do not include inmates who serve their entire terms in another county jail. For example, suppose an inmate serves two days of a sentence in your county jail and then is transferred to a neighboring county to serve the remaining eight days. The first two days should be included in your own ADP while the remaining eight days will be included in the ADP of the other county.

Seventeen Year Olds

There were about 8,894 seventeen year-olds held in Wisconsin Jails in 2002. While most of the questions are straightforward, the "most serious offense at admission" may be difficult to obtain. "Public order" includes offenses such as drug law violations, disorderly conduct, OMVWI, or liquor law violations.

Inmates Held in Other Counties

At least 6,570 inmates were transferred to and held in other county jails in 2002. If relevant, please indicate the number of such inmates, total days held in other county jails, and average daily cost.

Please Return to: Office of Justice Assistance, 131 West Wilson Street, Suite 202, Madison, WI 53702 or Fax: 608-266-6676 by Friday, May 7th

If you have any questions or comments about this form, please call Lori Phillips at 608-266-0936.

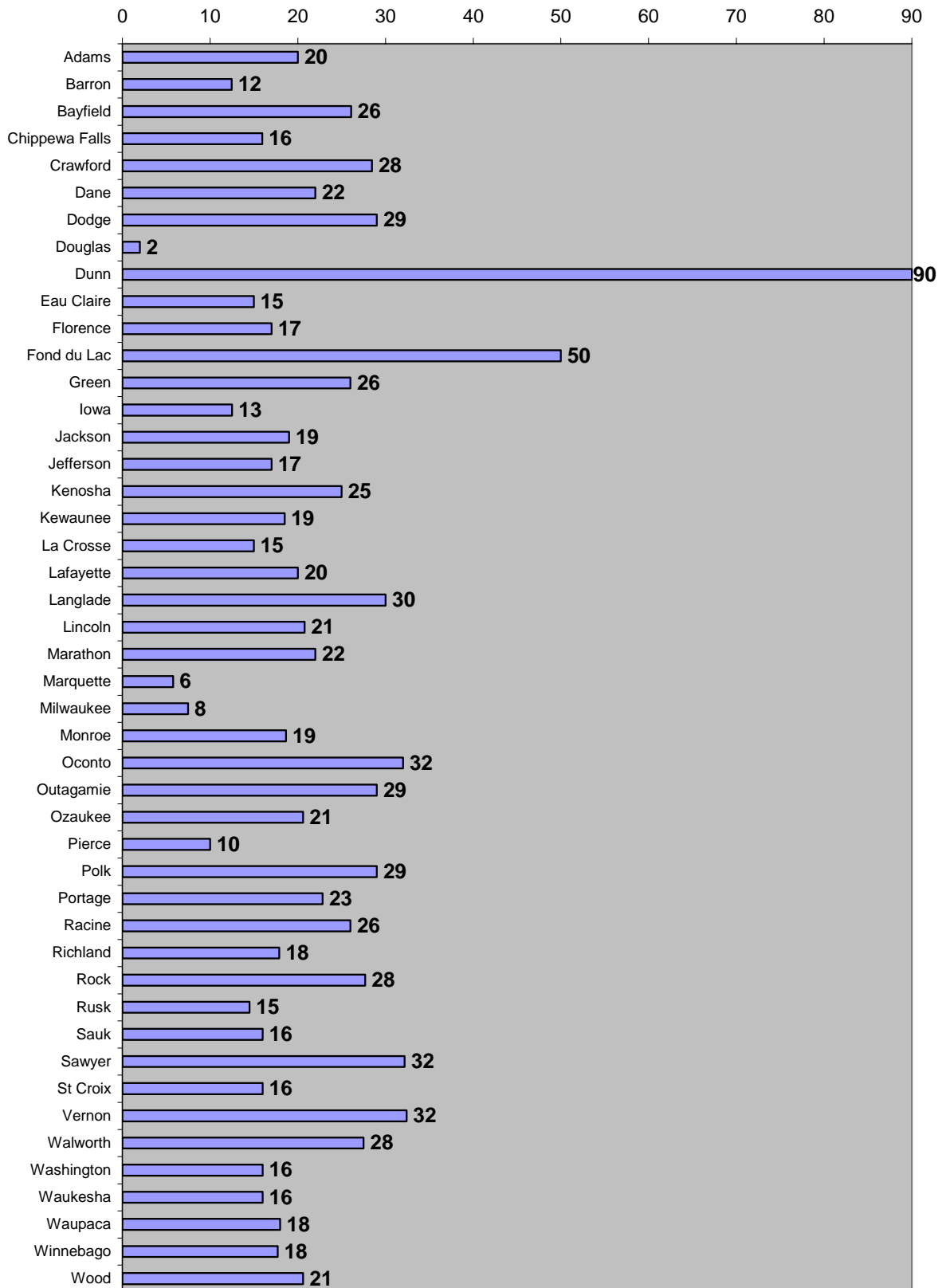
Appendix 2: Total Reported Adult Admissions by County

County	2001	2002	2003	Percent Change 2002-2003	Percent Change 2001-2003
Adams	1,392	1,541	1,299	-15.7%	-6.7%
Ashland	986	1,058			
Barron	1,603	1,657	1,818	9.7%	13.4%
Bayfield	564	635	699	10.1%	23.9%
Brown		9,381	9,186	-2.1%	
Buffalo	423				
Burnett	861	919	1,149	25.0%	33.4%
Calumet	1,024	978	951	-2.8%	-7.1%
Chippewa Falls	2,111	2,467	2,994	21.4%	41.8%
Clark	1,050	1,214	1,147	-5.5%	9.2%
Columbia	3,145	4,861	3,082	-36.6%	-2.0%
Crawford	352	344	429	24.7%	21.9%
Dane	17,063	17,143	16,780	-2.1%	-1.7%
Dodge	3,111	4,503	5,677	26.1%	82.5%
Door	765	769	887	15.3%	15.9%
Douglas	2,173		3,000		38.1%
Dunn	2,436	2,631	2,445	-7.1%	0.4%
Eau Claire	5,020	5,594	5,593	0.0%	11.4%
Florence	147	325	198	-39.1%	34.7%
Fond du Lac	2,775	3,354	3,796	13.2%	36.8%
Forest	720	540	888	64.4%	23.3%
Grant	1,046	982	1,060	7.9%	1.3%
Green	987	810	838	3.5%	-15.1%
Green Lake	691	731	883	20.8%	27.8%
Iowa	1,099	1,164	1,336	14.8%	21.6%
Iron	184	231			
Jackson	1,304	1,431	60	-95.8%	-95.4%
Jefferson	3,637	3,934	4,115	4.6%	13.1%
Juneau	1,421	1,470			
Kenosha	7,827	8,608	9,018	4.8%	15.2%
Kewaunee	326	376	403	7.2%	23.6%
La Crosse	6,118	6,111	6,284	2.8%	2.7%
Lafayette	307	273	296	8.4%	-3.6%
Langlade	1,198	1,302	1,446	11.1%	20.7%
Lincoln	1,038	1,014	1,049	3.5%	1.1%
Manitowoc	3,597	3,542	3,547	0.1%	-1.4%
Marathon	4,375	4,500	4,581	1.8%	4.7%

Appendix 2: Total Reported Adult Admissions by County continued

County	2001	2002	2003	Percent Change 2002-2003	Percent Change 2001-2003
Marinette	1,841		1,963		6.6%
Marquette	976	1,025	991	-3.3%	1.5%
Menominee Tribal		1,370			
Milwaukee	51,756	50,730	51,910	2.3%	0.3%
House of Corrections	19,500	16,800			
Monroe	2,033	2,276	2,318	1.8%	14.0%
Oconto	1,035		972		-6.1%
Oneida	2,080	2,238	2,186	-2.3%	5.1%
Outagamie	7,101	7,147	6,986	-2.3%	-1.6%
Ozaukee	3,157	3,555	3,709	4.3%	17.5%
Pepin	225	361	334	-7.5%	48.4%
Pierce	837	970	967	-0.3%	15.5%
Polk	1,895	1,836			
Portage	1,862	1,818	1,879	3.4%	0.9%
Price	469	477			
Racine	9,449	9,783	10,859	11.0%	14.9%
Richland	732	745	798	7.1%	9.0%
Rock	6,542	6,903	6,952	0.7%	6.3%
Rusk	770	834	862	3.4%	11.9%
Sauk	3,680	5,349	3,893	-27.2%	5.8%
Sawyer	1,303	1,230	1,490	21.1%	14.4%
Shawano	3,591	3,089			
Sheboygan	3,800	4,280			
St Croix	3,036	3,412	3,361	-1.5%	10.7%
Taylor	712	680			
Trempealeau	1,037	1,103	1,076	-2.4%	3.8%
Vernon	843	849	972	14.5%	15.3%
Vilas	1,417	1,991	1,548	-22.3%	9.2%
Walworth	5,491	5,582	5,405	-3.2%	-1.6%
Washburn	847	861	905	5.1%	6.8%
Washington	3,932	4,124			
Waukesha	8,738	8,936	9,500	6.3%	8.7%
Waupaca	1,792	1,969	1,312	-33.4%	-26.8%
Waushara	2,444	2,103	1,953	-7.1%	-20.1%
Winnebago	5,493	5,739	5,992	4.4%	9.1%
Wood	2,526	2,532	2,478	-2.1%	-1.9%

**Appendix 3: Reported Average Length of Adult Confinement by County
2003**



Appendix 4: Reported Average Length of Adult Confinement by County 2001 – 2003

County	2001	2002	2003	Percent Change 2002-2003	Percent Change 2001-2003
Adams	17	16	20	25.0%	17.6%
Ashland	21	20			
Barron		20	12	-37.7%	
Bayfield	22	23	26	13.9%	20.2%
Burnett	35	32			
Calumet	25				
Chippewa Falls	15	13	16	18.5%	5.9%
Crawford	27	42	28	-31.5%	5.4%
Dane	22		22		1.4%
Dodge		33	29	-11.5%	
Door	17	10			
Douglas			2		
Dunn		90	90	0.0%	
Eau Claire	31		15		-51.6%
Florence	14	30	17	-43.3%	21.4%
Fond du Lac	19	22	50	127.3%	167.0%
Forest	90				
Green	75	75	26	-65.3%	-65.3%
Green Lake		15			
Iowa	12	17	13	-26.5%	4.2%
Iron	40	40			
Jackson	17	17	19	9.8%	12.4%
Jefferson	17	17	17	0.0%	0.0%
Kenosha	27	25	25	0.0%	-7.4%
Kewaunee	21	17	19	8.8%	-11.9%
La Crosse	18	16	15	-6.3%	-16.7%
Lafayette	22	24	20	-16.7%	-9.1%
Langlade	90		30		-66.7%
Lincoln	25	22	21	-5.5%	-15.3%
Manitowoc	18	21			
Marathon	18	22	22	0.9%	20.2%
Marinette	17				
Marquette	13	6	6	1.8%	-55.4%
Menominee Tribal		11			
Milwaukee	7	6	8	17.2%	8.7%
Milwaukee House of Corrections		39			

Appendix 4: Reported Average Length of Adult Confinement by County 2001 – 2003
continued

County	2001	2002	2003	Percent Change 2002-2003	Percent Change 2001-2003
Monroe			19		
Oconto	27		32		18.5%
Outagamie	33	25	29	14.2%	-12.7%
Ozaukee	21	21	21	-1.9%	-3.3%
Pepin		15			
Pierce	11	10	10	0.0%	-11.4%
Polk	9	10	29	190.0%	222.2%
Portage	20	22	23	5.2%	12.0%
Price	26	23			
Racine	26	25	26	3.2%	1.0%
Richland	14	15	18	16.1%	27.7%
Rock		25	28	12.9%	
Rusk			15		
Sauk	16	13	16	23.1%	2.6%
Sawyer	41	32	32	-0.1%	-20.8%
Shawano	22	13			
St Croix	9	30	16	-46.7%	88.2%
Taylor	19	20			
Trempealeau	14				
Vernon	21	34	32	-5.5%	54.3%
Vilas	10	180			
Walworth	30	30	28	-8.3%	-8.3%
Washington	15	16	16	0.0%	6.7%
Waukesha	19	20	16	-20.0%	-15.8%
Waupaca	21	127	18	-85.8%	-12.2%
Waushara	23				
Winnebago	21	17	18	2.5%	-15.7%
Wood	16	20	21	1.0%	26.4%

Appendix 5: Reported Average Adult Daily Population (ADP) by County*

County	2001			2002			2003			Percent Change All ADP 2002-2003	Percent Change All ADP 2001-2003
	All	Electronic Monitor	% of Daily Population on Electronic Monitor	All	Electronic Monitor	% of Daily Population on Electronic Monitor	All	Electronic Monitor	% of Daily Population on Electronic Monitor		
Adams	72	0	0%	78	0	0%	80			3%	11%
Ashland	60	1	2%	66	9	14%					
Barron	92			49	12	25%	61	24	40%	25%	-34%
Bayfield	27	0	0%	28			28	2	5%	1%	4%
Brown				489	12	2%					
Buffalo	19	0	0%								
Burnett	27	5	19%	32	3	9%	30	1	3%	-6%	11%
Calumet	42	0	0%	40			42	1	2%	5%	-1%
Chippewa Falls	87	6	7%	92	5	5%	135	3	2%	47%	55%
Clark				75	0	0%	100			33%	
Columbia	161			186	0	0%	189	9	5%	2%	17%
Crawford	26	0	0%	30	0	0%	33	0	0%	11%	29%
Dane	1,018	47	5%	1,017	53	5%	1,012	55	5%	0%	-1%
Dodge	187			346	16	5%	352	21	6%	2%	88%
Door	43	0	0%	55			49	13	27%	-11%	14%
Douglas	75						80	5	6%		7%
Dunn	125	0	0%	133	0	0%	116	2	2%	-13%	-7%
Eau Claire	230			239	0	0%	244			2%	6%
Florence	18	1	6%		1		20	2	10%		11%
Fond du Lac	153	0	0%	181	17	9%	120	230	192%	-34%	-22%
Forest	34			45	0	0%	70			56%	106%
Grant	53	0	0%	53	0	0%	56			5%	6%
Green	53	0	0%	46	0	0%	45			-3%	-16%
Green Lake	37			42	1	2%	37			-12%	0%
Iowa	38	0	0%	47	0	0%	46	2	4%	-2%	21%
Iron	11	10	91%	23	5	22%					-100%
Jackson	64	4	6%	67	5	7%	45			-33%	-30%
Jefferson	163	33	20%	165	12	7%	178			8%	10%
Juneau	70	2	3%	36	3	8%					
Kenosha	539			584	0	0%	626	0	0%	7%	16%
Kewaunee	24	0	1%	22	0	0%	28			27%	15%
La Crosse	297	17	6%	266	0	0%	265	0	0%	0%	-11%
Lafayette	15			17	1	6%	20	0	0%	18%	33%
Langlade	75	0	0%	72	0	0%	61			-15%	-19%
Lincoln	51	6	12%	49	6	11%	49	5	10%	-1%	-3%
Manitowoc	180	10	5.6%	183	10	5.5%	183	10	5.5%	0%	2%
Marathon	245	24	10.0%	278	38	13.7%	297			7%	21%

A blank cell means the jail did not respond to this question. A zero in a cell means the jail responded but did not have anyone in electronic monitoring.

Appendix 5: Reported Average Adult Daily Population (ADP) by County continued

County	2001			2002			2003			Percent Change All ADP 2002-2003	Percent Change All ADP 2001-2003
	All	Electronic Monitor	% of Daily Population on Electronic Monitor	All	Electronic Monitor	% of Daily Population on Electronic Monitor	All	Electronic Monitor	% of Daily Population on Electronic Monitor		
Marinette	59	1	0.8%				61	1	1.6%		4%
Marquette	47	3	6.4%	44	40	91.5%	45	3	6.6%	3%	-4%
Menominee Tribal				42	0	0.0%					
Milwaukee	1,051	0	0.0%	982	0	0.0%	1,066	0	0.0%	9%	1%
House of Corrections	2,603	289		2,459	271	11%					
Monroe	65			66			67	4	6.0%	2%	3%
Oconto	43	0	0.0%				46	0	0.0%		8%
Oneida	120			125	0	0.0%					
Outagamie	508	8	1.6%	469	11	2.4%	459	23	5.0%	-2%	-10%
Ozaukee	185	0	0.0%	205	0	0.0%	207	0	0.0%	1%	12%
Pepin	16	0	0.0%	23	0	0.0%	26	0	0.0%	13%	63%
Pierce	26	0	0.0%	27	0	0.0%	25	0	0.0%	-7%	-3%
Polk	48	0	0.0%	58	0	0.0%	90			55%	88%
Portage	94	14	14.9%				98	18	18.6%		5%
Price	19	0		19	0	0.0%					
Racine	592	0	0.0%	633	0	0.0%	565			-11%	-5%
Richland	29	0	0.0%	33	5	13.6%	35	7	19.3%	6%	22%
Rock	463	7	1.5%	446	4	1.0%	474	5	1.1%	6%	2%
Rusk	33			37	0	0.0%	42	0	0.0%	12%	26%
Sauk	135	9	6.4%	141	12	8.8%	160	8	5.0%	14%	19%
Sawyer	58	3	5.3%	53	5	8.8%	28	3	11.2%	-46%	-51%
Shawano	230			85	0	0.2%					
Sheboygan	249	4		231	65	28.1%					
St Croix	84	0	0.0%	105	3	2.9%	105			0%	25%
Taylor	34	1		41	0	0.0%					
Trempealeau	35	4	10.9%	41	6	14.4%	38	4	11.7%	-8%	8%
Vernon	27	0	0.0%	27	3	9.9%	27	3	9.7%	-1%	0%
Vilas	74	2	3.0%	95	2	2.1%	88	2	2.3%	-7%	19%
Walworth	291	0	0.0%	316	0	0.0%	324	0	0.0%	3%	11%
Washburn	25	6	24.0%	24			27	5	18.5%	13%	8%
Washington	189	23	12.3%	204	18	8.8%	208	17	8.2%	2%	10%
Waukesha	567			612	11	1.8%	601	6	1.0%	-2%	6%
Waupaca	94	0	0.0%	111	0	0.0%	97	2	2.1%	-12%	3%
Waushara	149	0	0.0%	135	0	0.0%	87	0	0.0%	-36%	-42%
Winnebago	126			272	11	3.9%	291	11	3.9%	7%	131%
Wood	117	0	0.0%	142	3	2.1%	152	2	1.3%	7%	30%